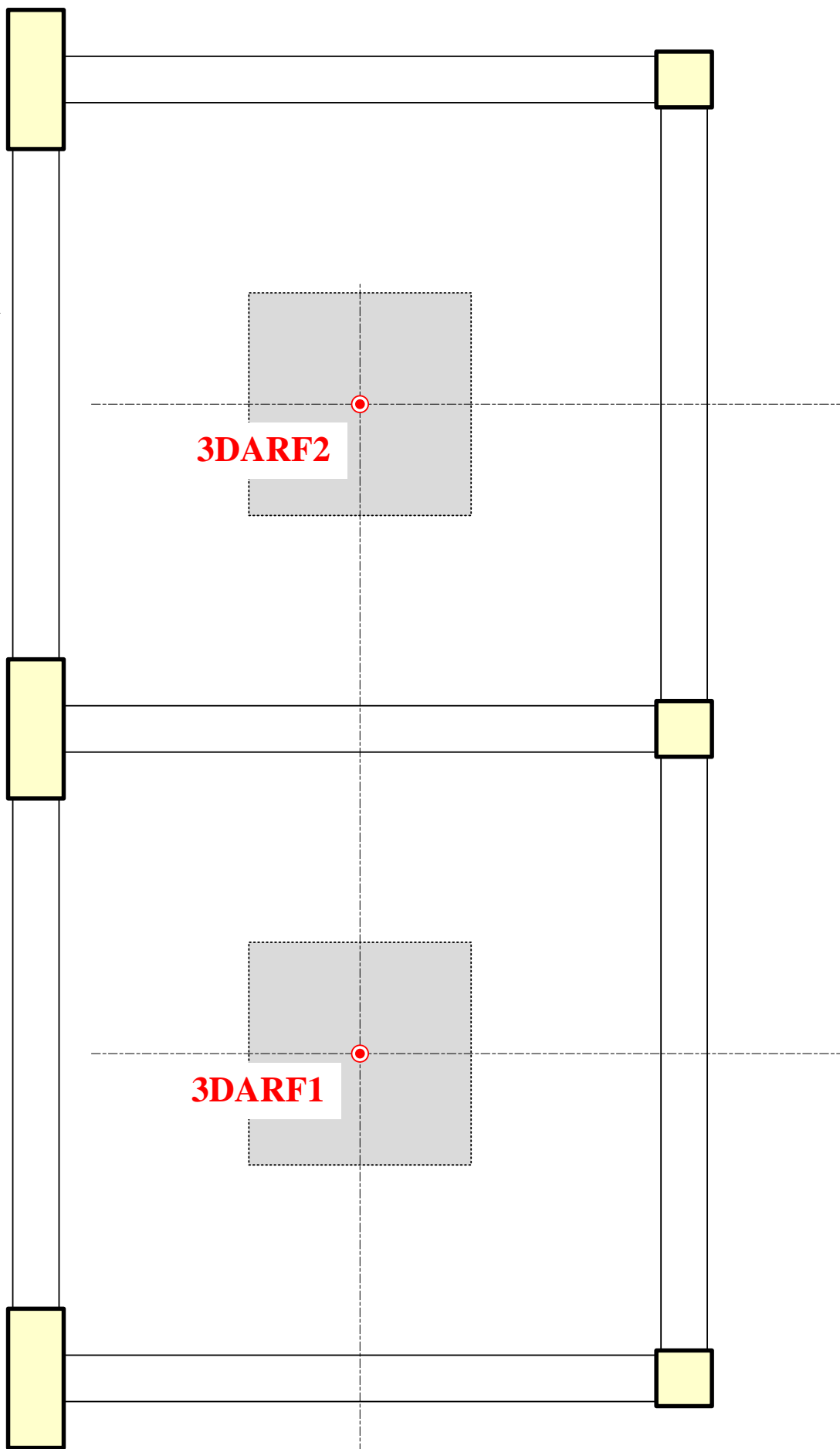


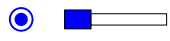

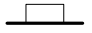
3D  
Acceleration  
transducer

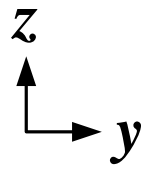
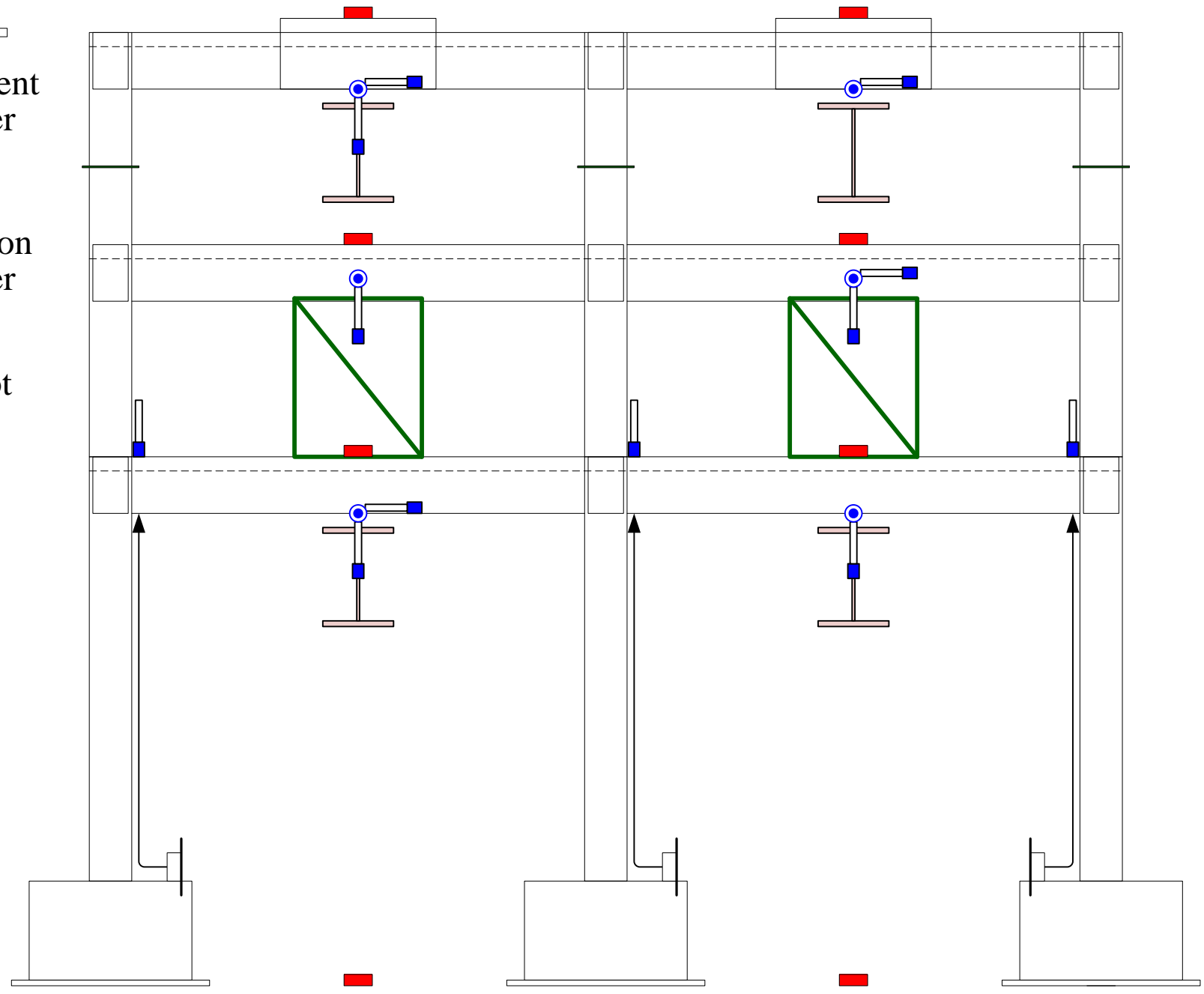


**3DARF2**

**3DARF1**

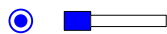
**RF**

-  Displacement transducer
-  3D Acceleration transducer
-  String pot

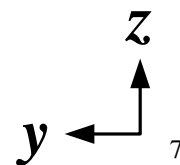
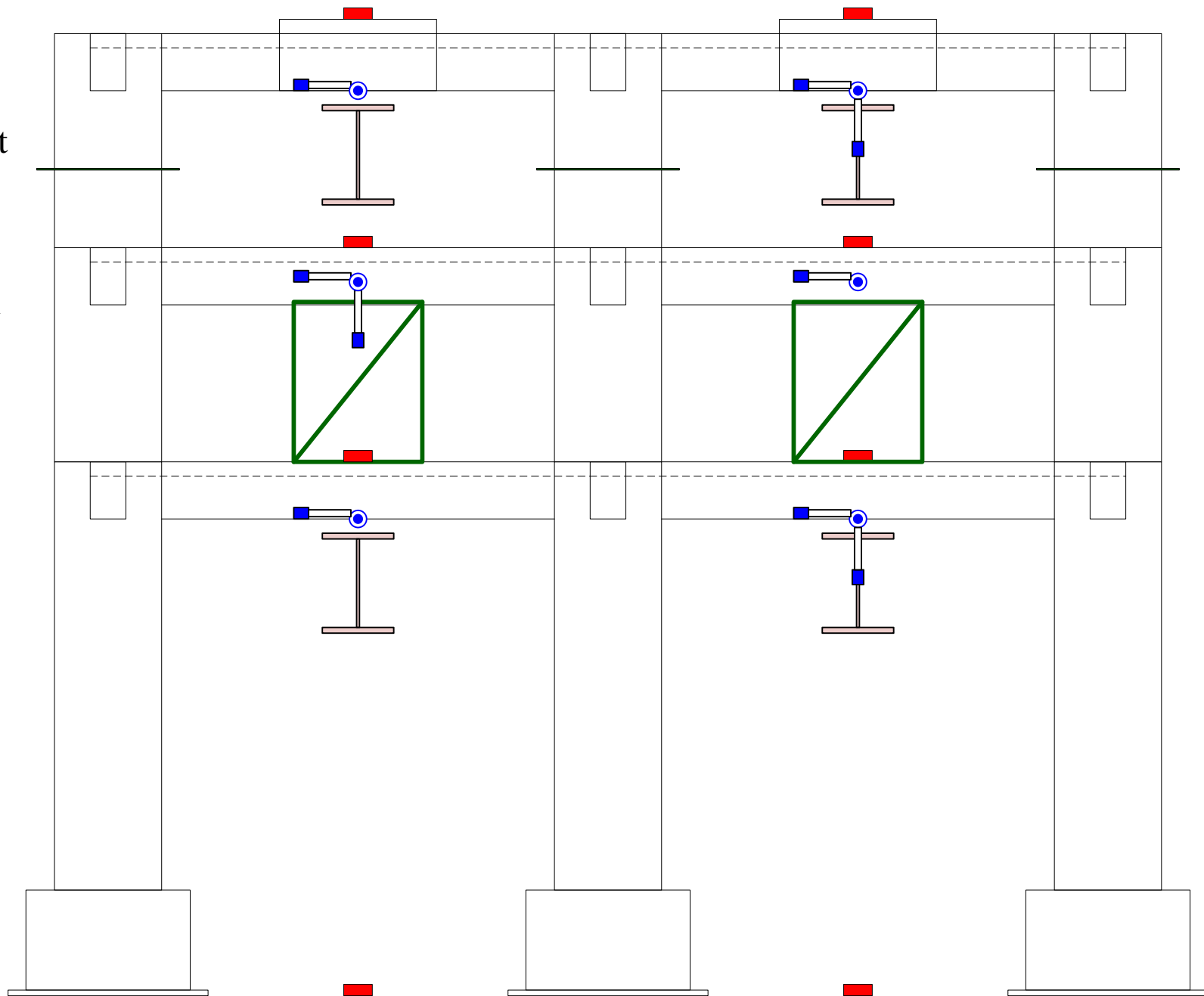


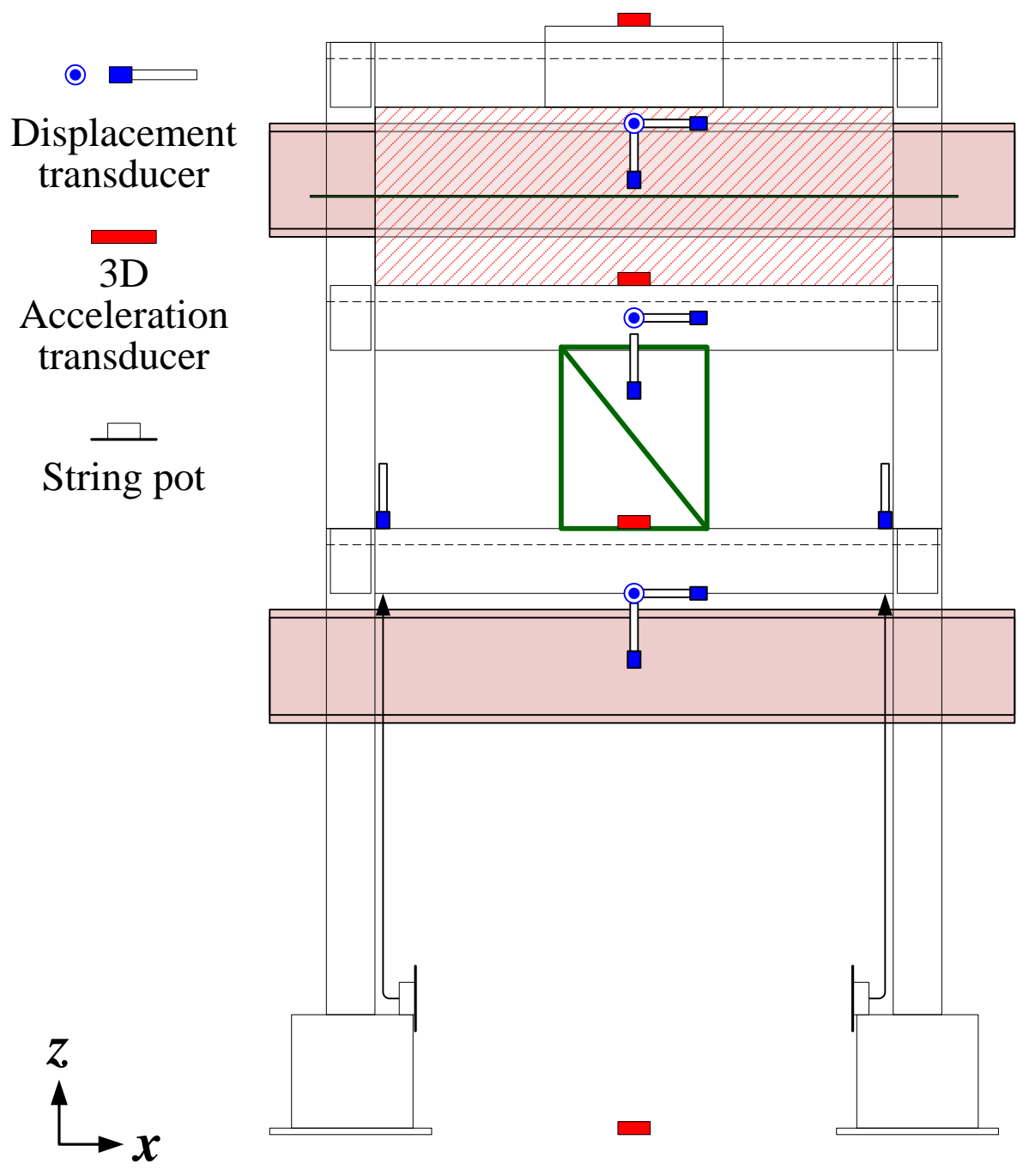


Displacement  
transducer



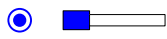
3D  
Acceleration  
transducer







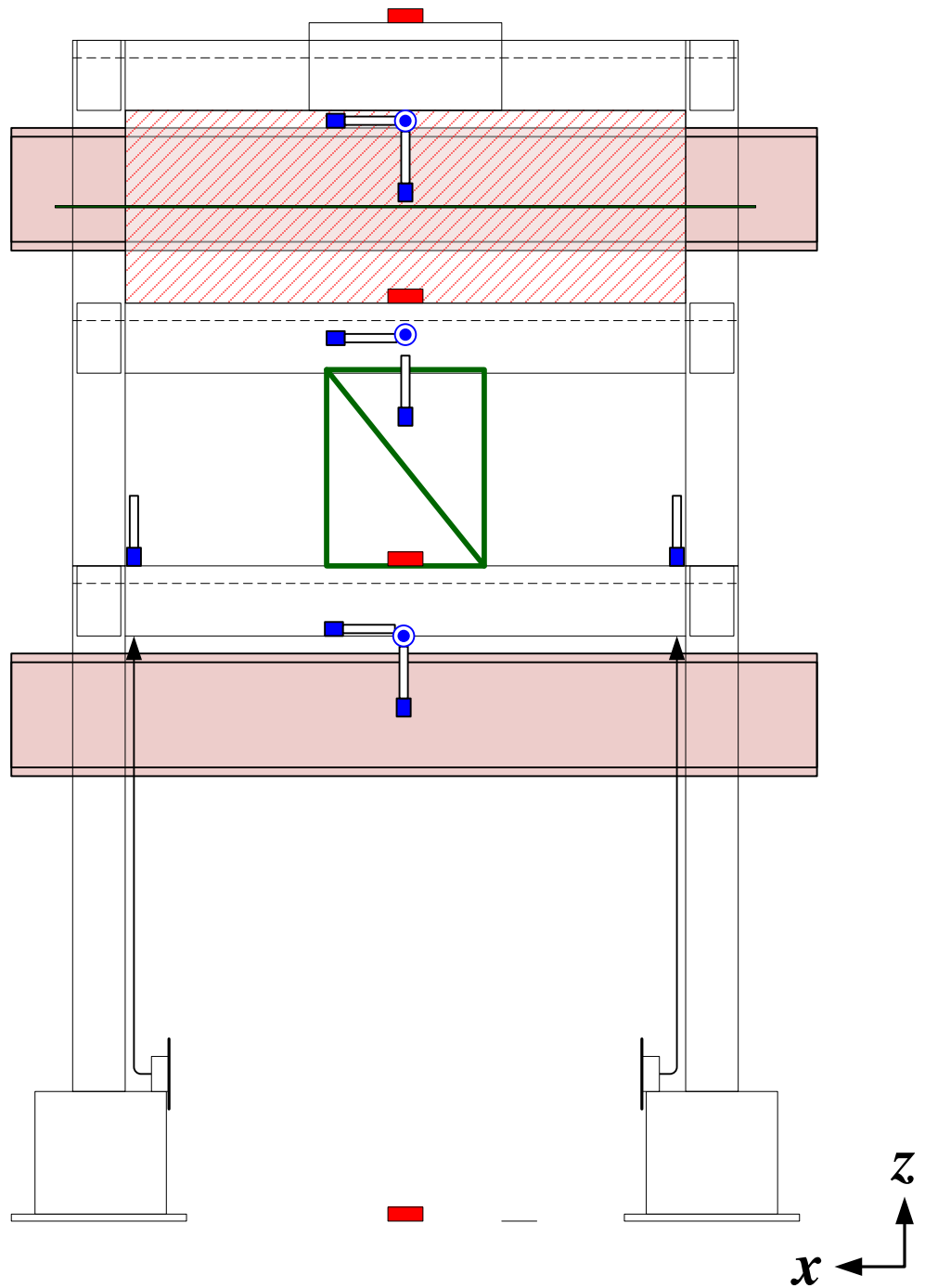
Displacement transducer



3D Acceleration transducer



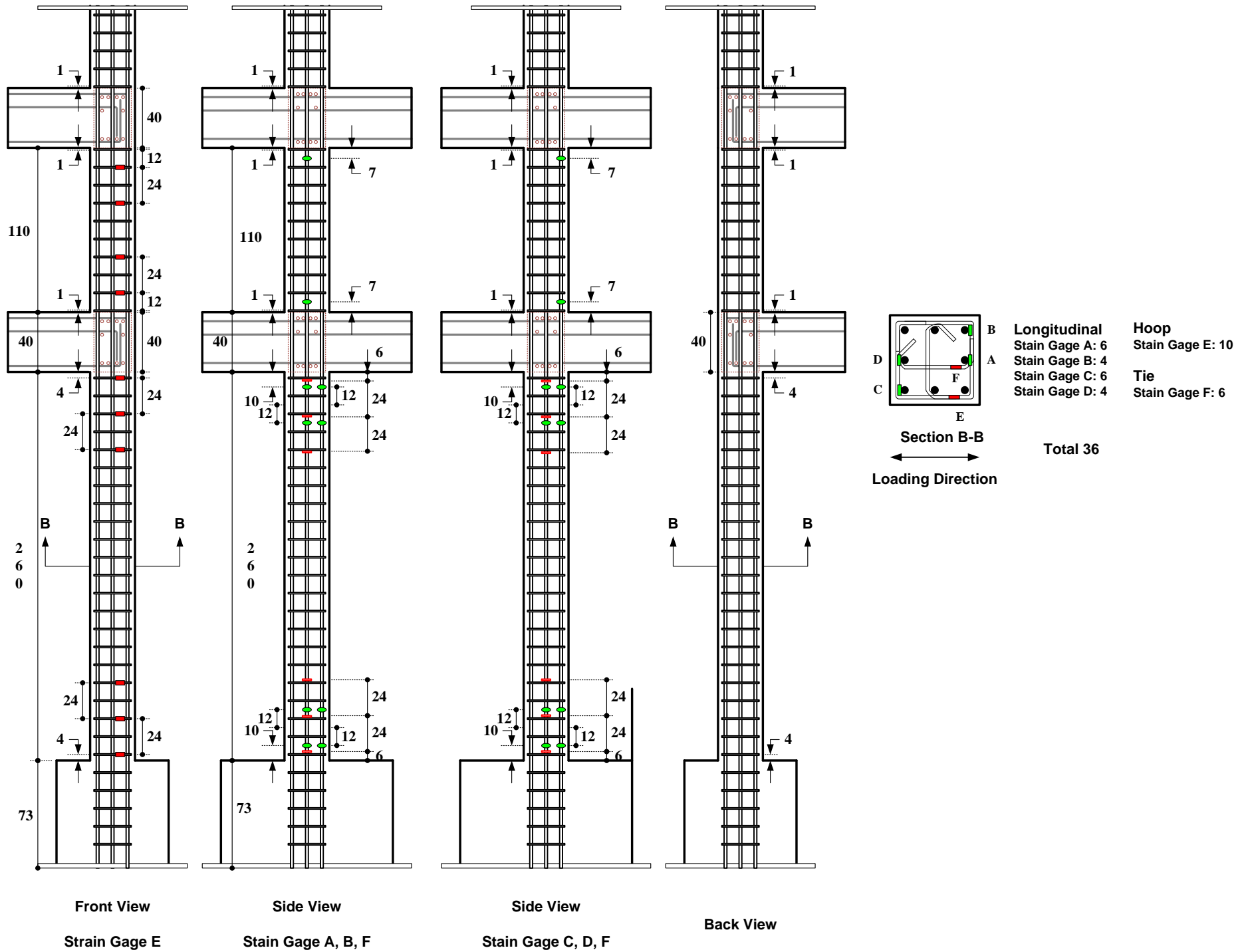
String pot

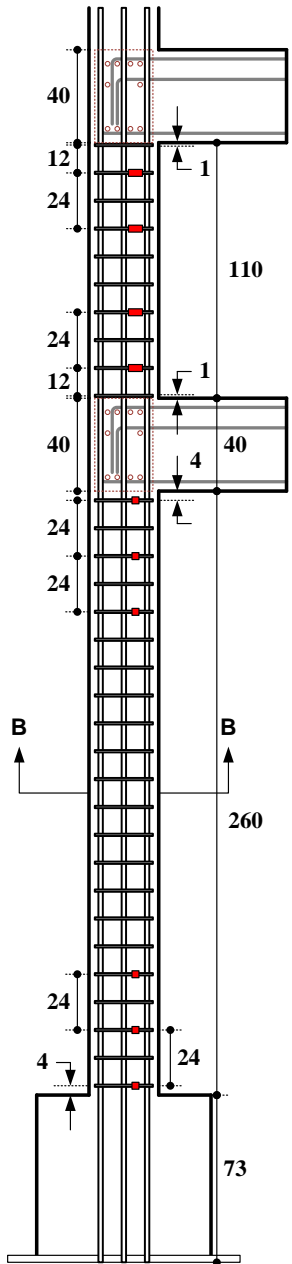


### 頻道對照表

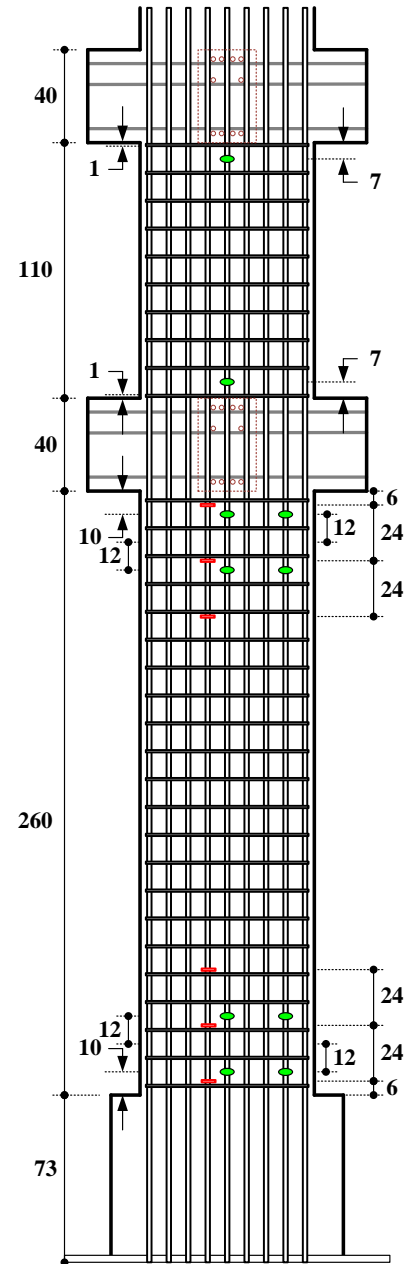
Sensor ID	Location	Description
3DAGF1	Ground floor	X
3DAGF1	Ground floor	Y
3DAGF1	Ground floor	Z
3DA1F1	1st floor	X
3DA1F1	1st floor	Y
3DA1F1	1st floor	Z
3DA1F2	1st floor	X
3DA1F2	1st floor	Y
3DA1F2	1st floor	Z
3DA2F1	2nd floor	X
3DA2F1	2nd floor	Y
3DA2F1	2nd floor	Z
3DA2F2	2nd floor	X
3DA2F2	2nd floor	Y
3DA2F2	2nd floor	Z
3DARF1	Roof floor	X
3DARF1	Roof floor	Y
3DARF1	Roof floor	Z
3DARF2	Roof floor	X
3DARF2	Roof floor	Y
3DARF2	Roof floor	Z
SP9	Ground floor	G2706623B

Sensor ID	Location	Description
SP1	Ground floor	G2706619B
SP2	Ground floor	G2706618B
SP3	Ground floor	G2706622B
SP4	Ground floor	G2706617B
SP5	Ground floor	G2706624B
SP6	Ground floor	G2706616B
SP7	Ground floor	G2706621B
SP8	Ground floor	G2706620B
DXGF1	Ground floor	±250mm
DZGF1	Ground floor	±50mm
DXGF2	Ground floor	±250mm
DYGF1	Ground floor	±200mm
DZGF2	Ground floor	±50mm
TP3	1st floor	±200mm
DX1F2	1st floor	±250mm
DY1F1	1st floor	±200mm
TP2	1st floor	±200mm
TP4	1st floor	±200mm
TP6	1st floor	±150mm
DZ1F1	1st floor	±100mm
TP1	1st floor	±100mm
DX1F1	1st floor	±250mm
TP5	1st floor	±200mm
DZ1F2	1st floor	±100mm
TP7	2nd floor	±150mm
TP8	2nd floor	±100mm
TP9	2nd floor	±150mm
DX2F1	2nd floor	±150mm
DY2F1	2nd floor	±150mm
DZ2F1	2nd floor	±50mm
DX2F2	2nd floor	±150mm
DZ2F2	2nd floor	±50mm

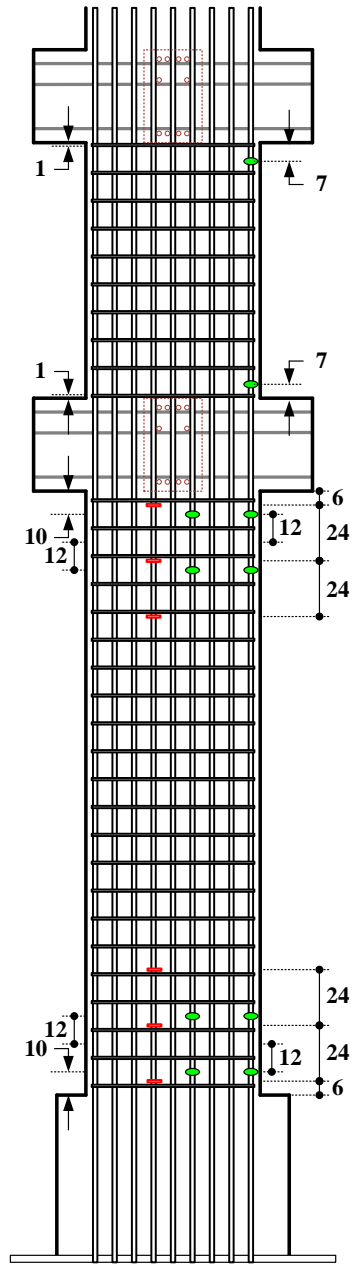




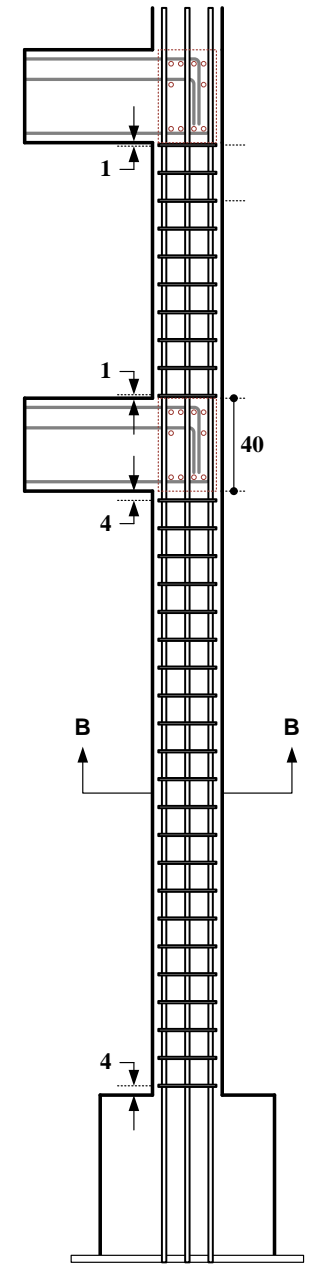
Front View  
Strain Gage E



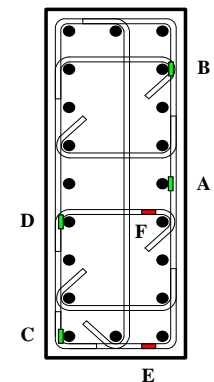
Side View  
Strain Gage A, B, F



Side View  
Strain Gage C, D, F

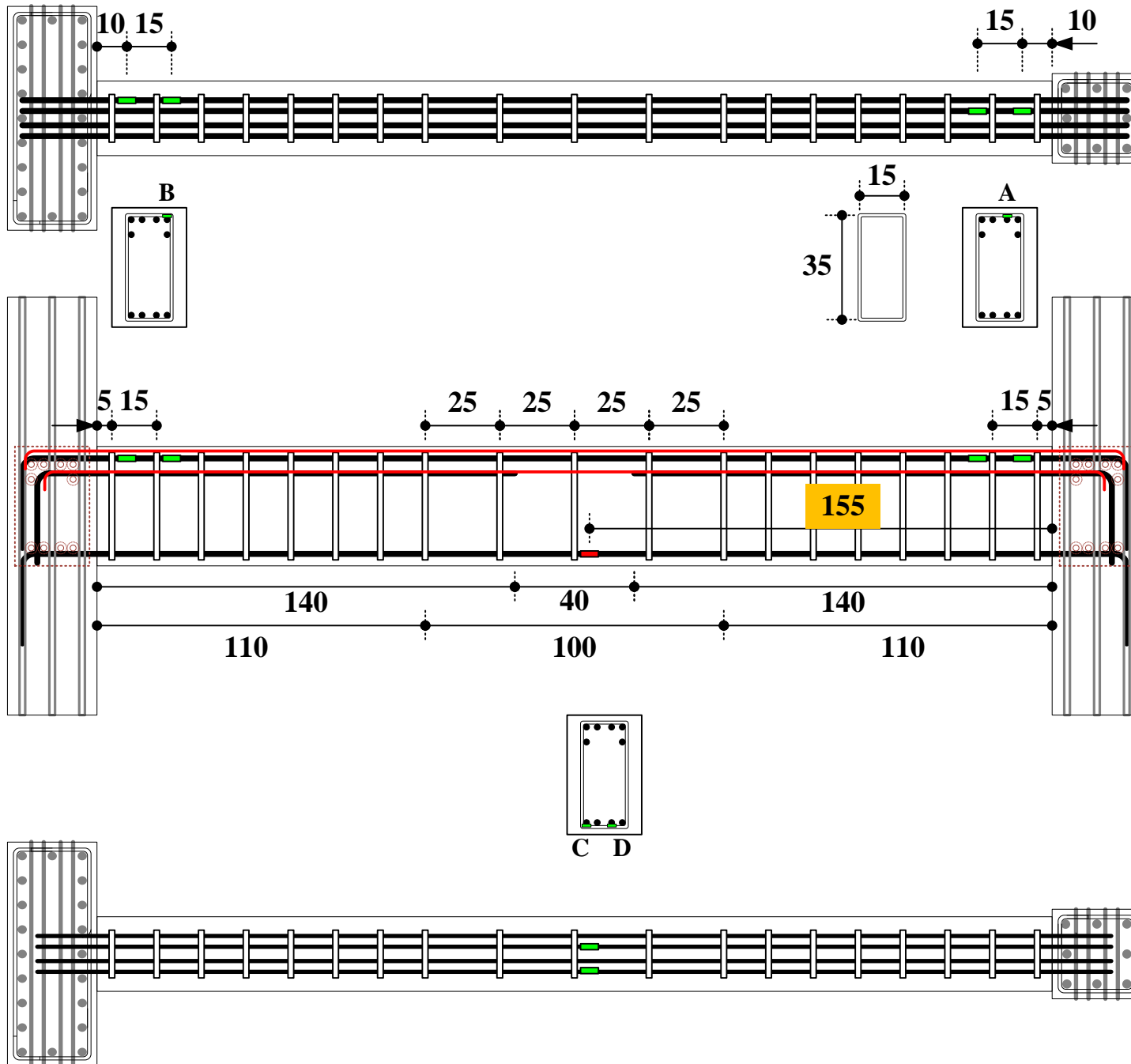


Back View



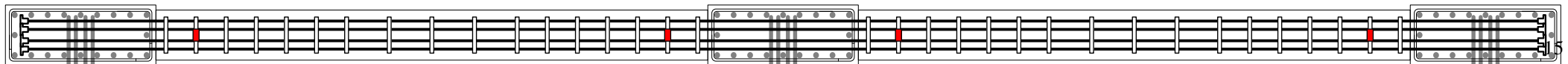
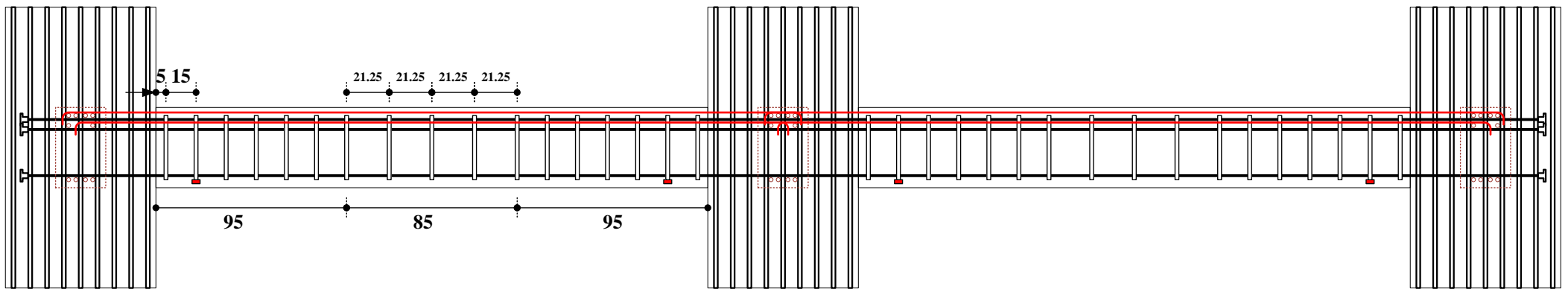
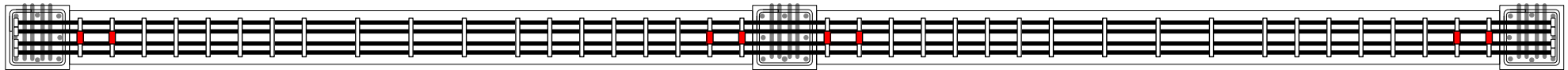
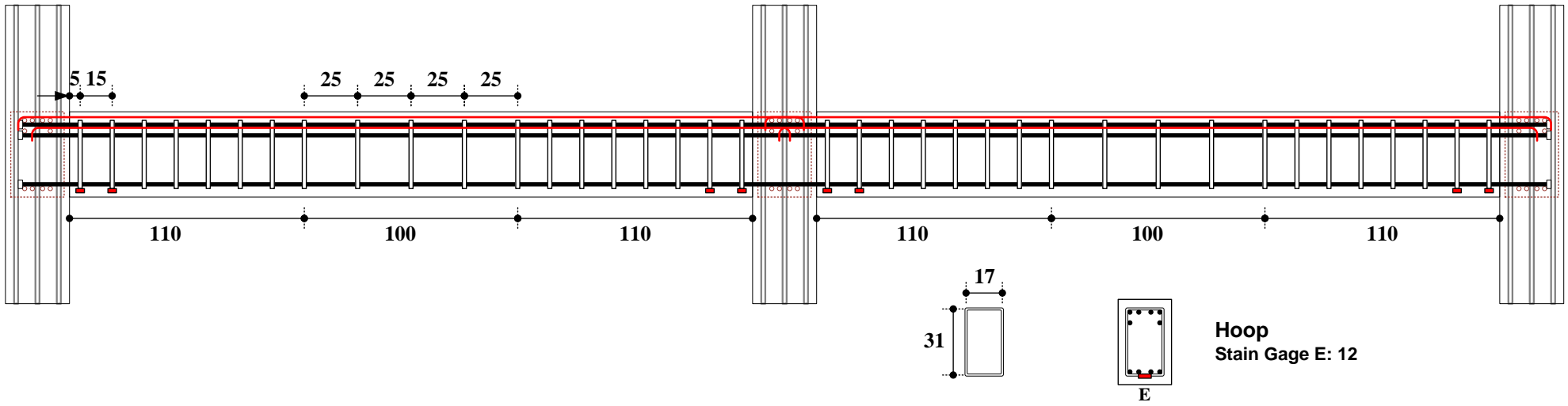
Section B-B  
Loading Direction

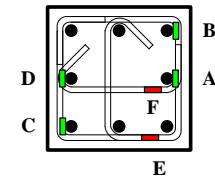
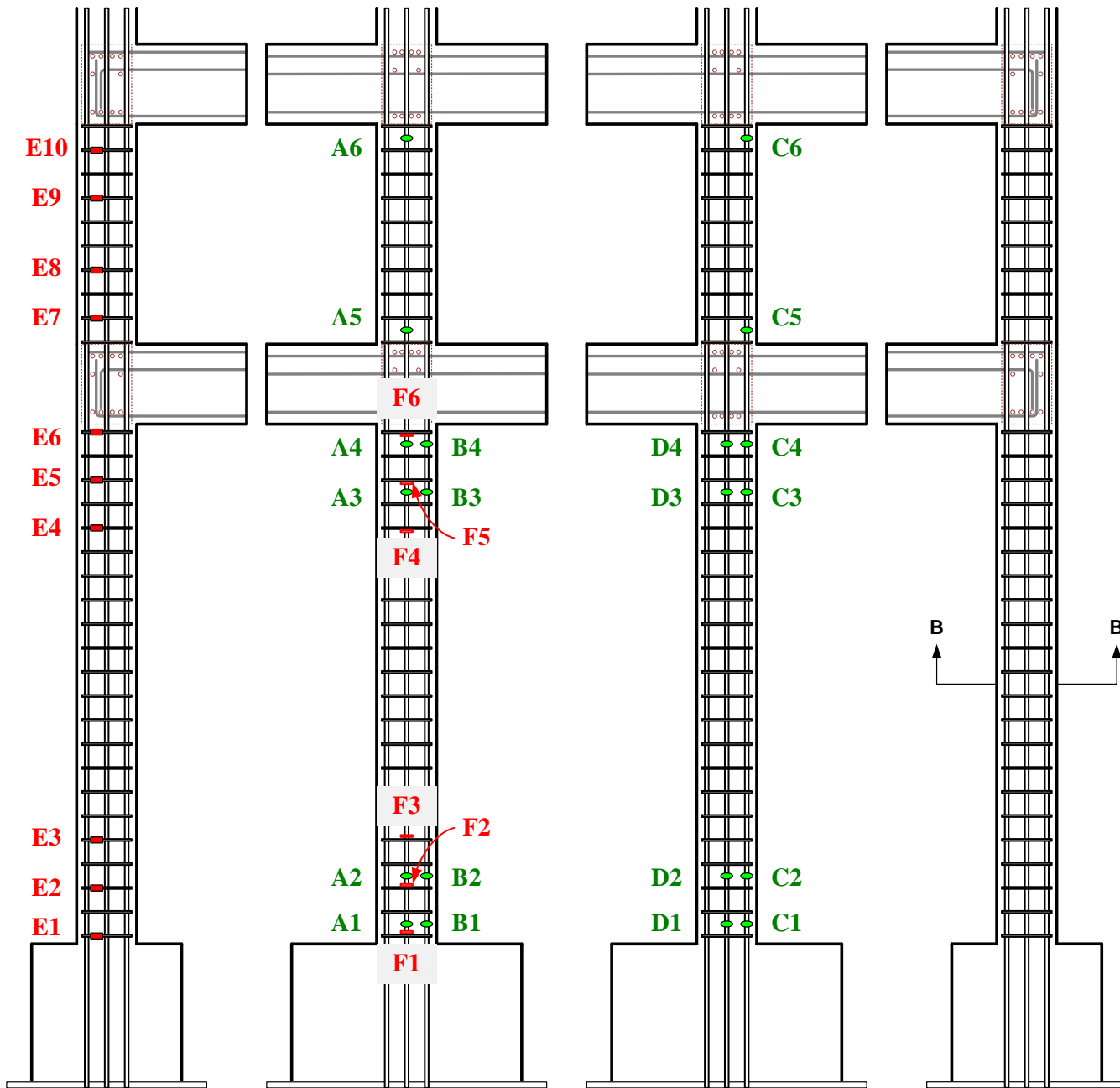
- Longitudinal
- Stain Gage A: 6
- Stain Gage B: 4
- Stain Gage C: 6
- Stain Gage D: 4
- Total 36**
- Hoop
- Stain Gage E: 10
- Tie
- Stain Gage F: 6



**Longitudinal**  
**Stain Gage A: 2**  
**Stain Gage B: 2**  
**Stain Gage C: 1**  
**Stain Gage D: 1**

**Total 18**





Section B-B  
 Loading Direction

**Longitudinal**  
 Stain Gage A: 6  
 Stain Gage B: 4  
 Stain Gage C: 6  
 Stain Gage D: 4

**Hoop**  
 Stain Gage E: 10  
**Tie**  
 Stain Gage F: 6

Total 36

Front View

Side View

Side View

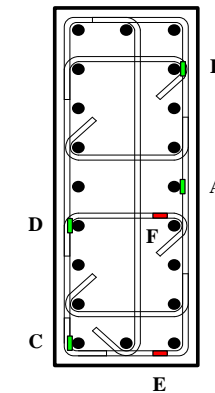
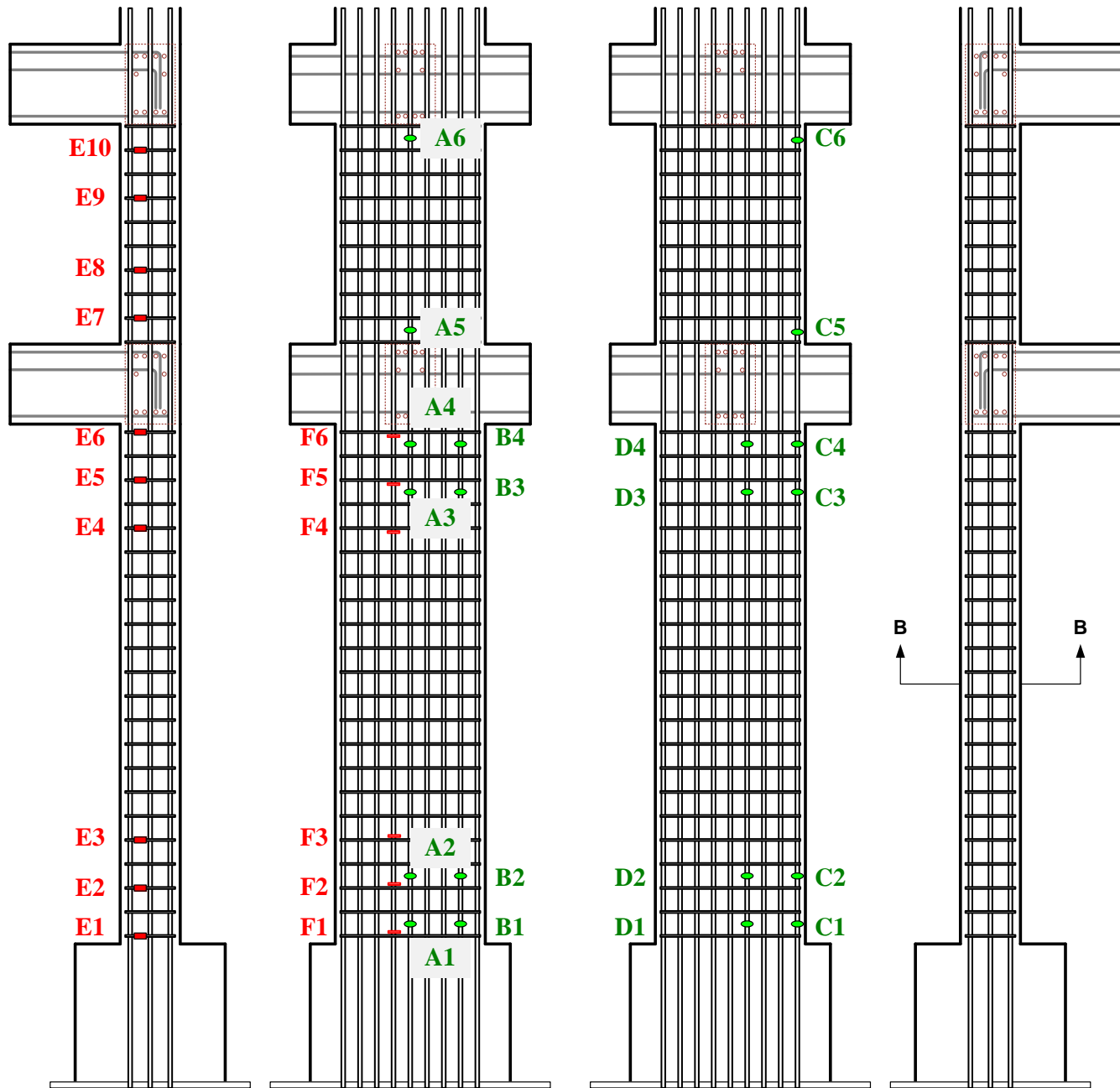
Back View

Strain Gage E

Strain Gage A, B, F

Strain Gage C, D, F





Section B-B  
Loading Direction

<b>Longitudinal</b>	<b>Hoop</b>
Stain Gage A: 6	Stain Gage E: 10
Stain Gage B: 4	
Stain Gage C: 6	<b>Tie</b>
Stain Gage D: 4	Stain Gage F: 6
<b>Total 36</b>	

Front View

Side View

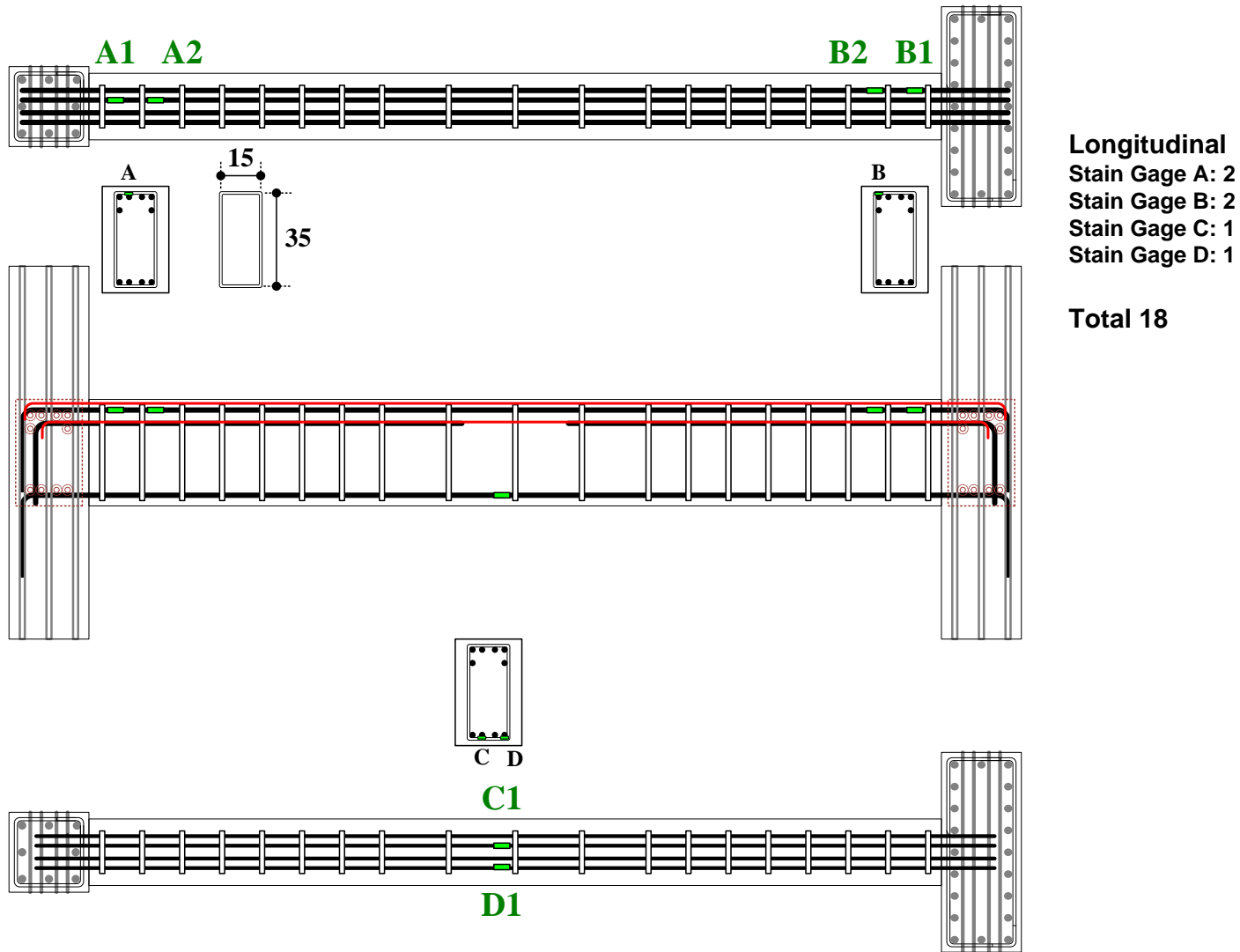
Side View

Back View

Strain Gage E

Strain Gage A, B, F

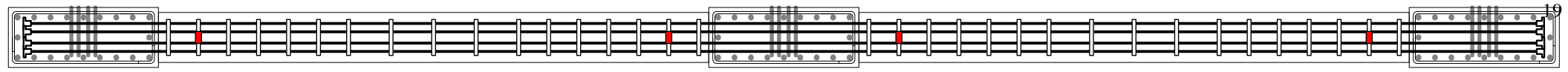
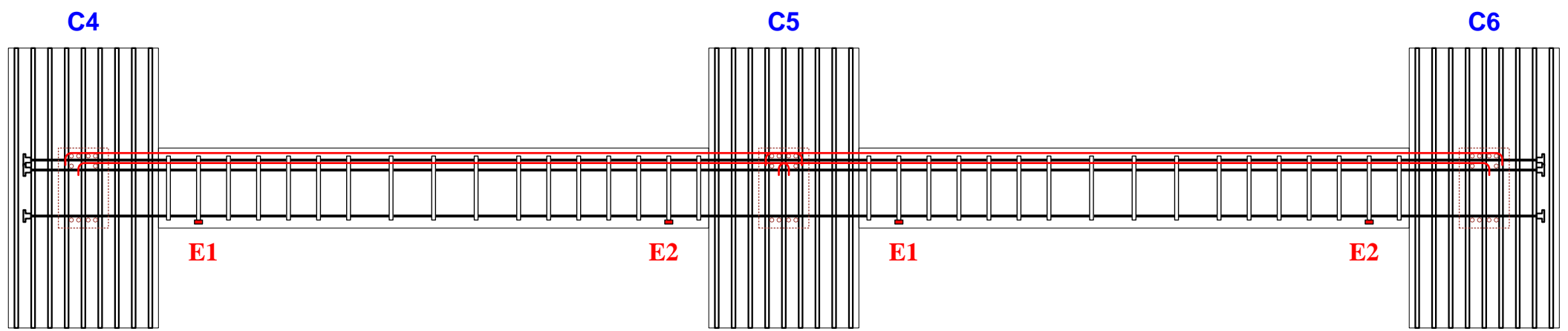
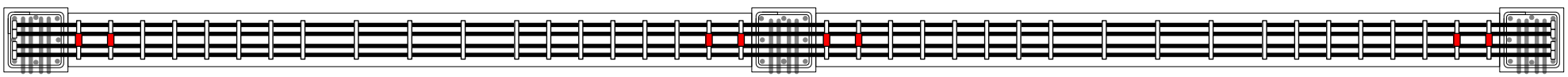
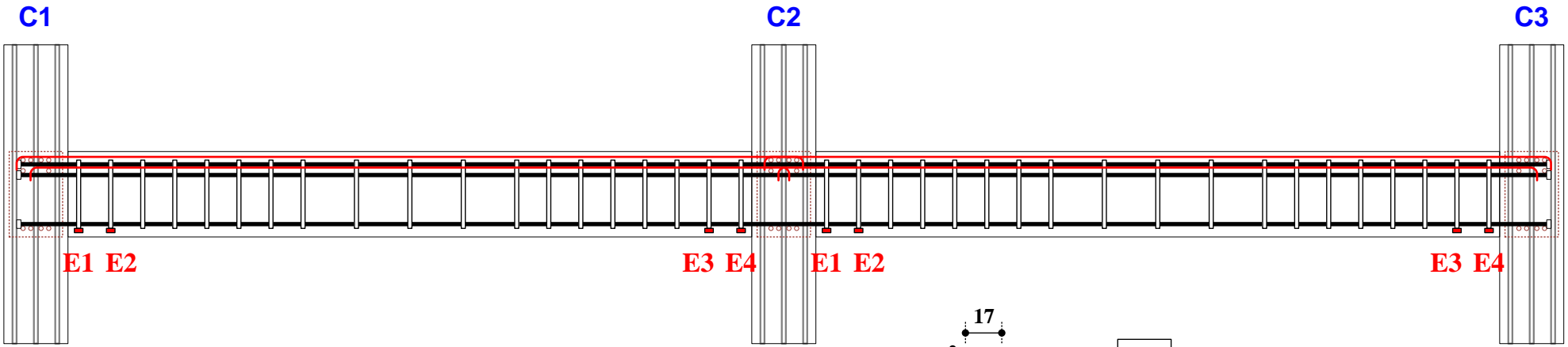
Strain Gage C, D, F

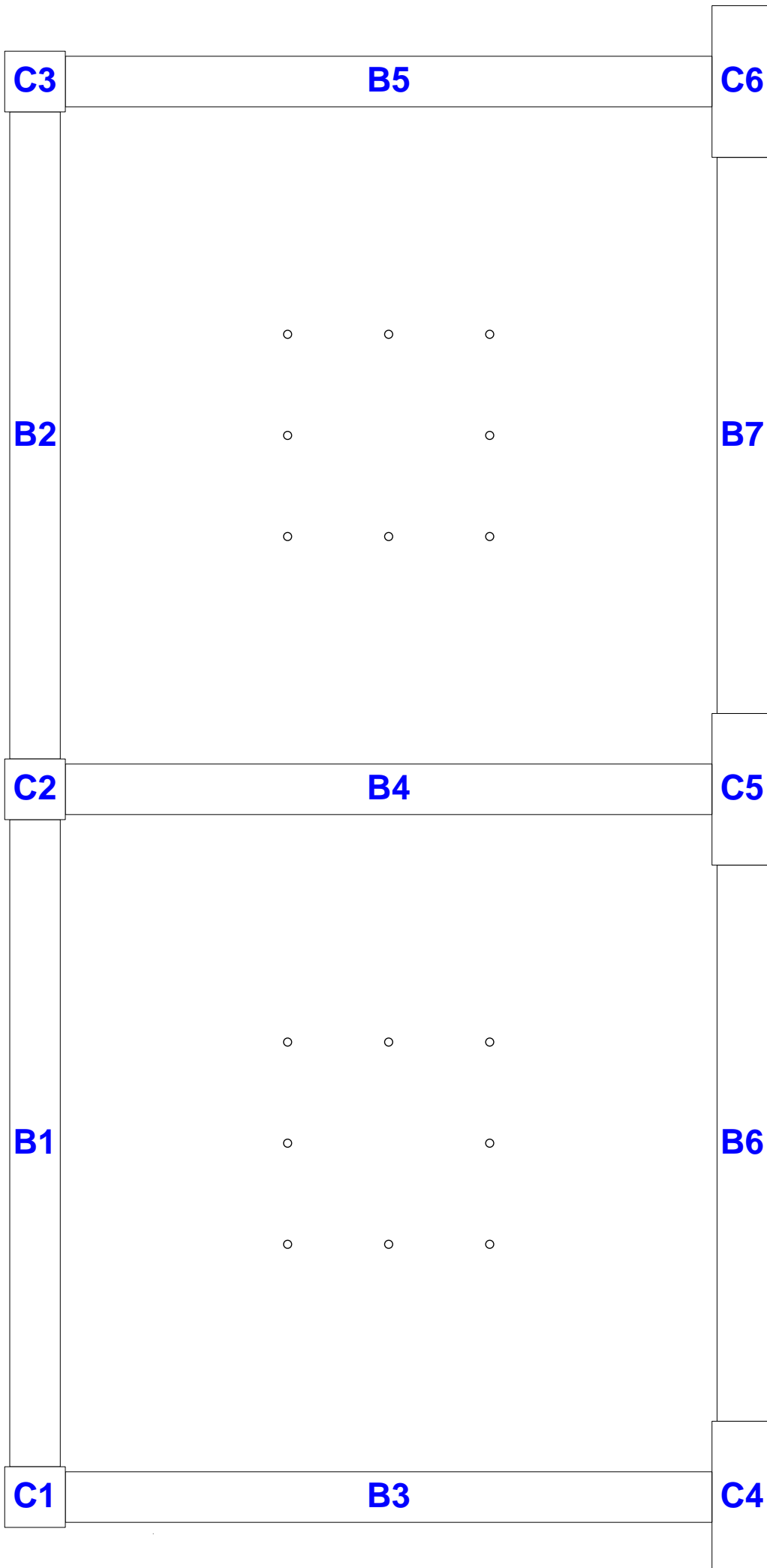


應變計編號規則

XYZΓ

前兩位編碼 XY，即為柱編號或梁編號(如第 21 頁)。後兩位編碼 ZΓ，即為應變計所在位置編號(如第 19、20 頁)。





## 頻道對照表

Channel	Sensor ID	Location	Description	Note
CH 01	C1A1	GF column 1 (bottom-center) longitude		
CH 02	C1A2	GF column 1 (top-center) longitude		
CH 03	C1B1	GF column 1 (bottom-corner) longitude		
CH 04	C1B2	GF column 1 (top-corner) longitude		
CH 05	C1C1	GF column 1 (bottom-corner) longitude		
CH 06	C1C2	GF column 1 (top-corner) longitude		
CH 07	C1D1	GF column 1 (bottom-center) longitude		
CH 08	C1D2	GF column 1 (top-center) longitude		
CH 09	C1E1	GF column 1 (bottom) hoop		
CH 10	C1E2	GF column 1 (center) hoop		
CH 11	C1E3	GF column 1(top) hoop		
CH 12	C1F1	GF column 1 (bottom) tie		
CH 13	C1F2	GF column 1 (center) tie		
CH 14	C1F3	GF column 1 (top) tie		
CH 15	C2A1	GF column 2 (bottom-center) longitude		
CH 16	C2A2	GF column 2 (top-center) longitude		
CH 17	C2B1	GF column 2 (bottom-corner) longitude		
CH 18	C2B2	GF column 2 (top-corner) longitude		
CH 19	C2C1	GF column 2 (bottom-corner) longitude		
CH 20	C2C2	GF column 2 (top-corner) longitude		
CH 21	C2D1	GF column 2 (bottom-center) longitude		
CH 22	C2D2	GF column 2 (top-center) longitude		
CH 23	C2E1	GF column 2 (bottom) hoop		
CH 24	C2E2	GF column 2 (center) hoop		
CH 25	C2E3	GF column 2(top) hoop		
CH 26	C2F1	GF column 2 (bottom) tie		
CH 27	C2F2	GF column 2 (center) tie		
CH 28	C2F3	GF column 2 (top) tie		
CH 29	C3A1	GF column 3 (bottom-center) longitude		
CH 30	C3A2	GF column 3 (top-center) longitude		

Channel	Sensor ID	Location	Description	Note
CH 31	C3B1	GF column 3 (bottom-corner) longitude		
CH 32	C3B2	GF column 3 (top-corner) longitude		
CH 33	C3C1	GF column 3 (bottom-corner) longitude		
CH 34	C3C2	GF column 3 (top-corner) longitude		
CH 35	C3D1	GF column 3 (bottom-center) longitude		
CH 36	C3D2	GF column 3 (top-center) longitude		
CH 37	C3E1	GF column 3 (bottom) hoop		
CH 38	C3E2	GF column 3 (center) hoop		
CH 39	C3E3	GF column 3(top) hoop		
CH 40	C3F1	GF column 3 (bottom) tie		
CH 41	C3F2	GF column 3 (center) tie		
CH 42	C3F3	GF column 3 (top) tie		
CH 43	C5A1	GF column 5 (bottom-center) longitude		
CH 44	C5A2	GF column 5 (top-center) longitude		
CH 45	C5B1	GF column 5 (bottom-corner) longitude		
CH 46	C5B2	GF column 5 (top-corner) longitude		
CH 47	C5C1	GF column 5 (bottom-corner) longitude		
CH 48	C5C2	GF column 5 (top-corner) longitude		
CH 49	C5D1	GF column 5 (bottom-center) longitude		
CH 50	C5D2	GF column 5 (top-center) longitude		
CH 51	C5E1	GF column 5 (bottom) hoop		
CH 52	C5E2	GF column 5 (center) hoop		
CH 53	C5E3	GF column 5(top) hoop		
CH 54	C5F1	GF column 5 (bottom) tie		
CH 55	C5F2	GF column 5 (center) tie		
CH 56	C5F3	GF column 5 (top) tie		
CH 57	C6A1	GF column 6 (bottom-center) longitude		
CH 58	C6A2	GF column 6 (top-center) longitude		
CH 59	C6B1	GF column 6 (bottom-corner) longitude		
CH 60	C6B2	GF column 6 (top-corner) longitude		
CH 61	C6C1	GF column 6 (bottom-corner) longitude		
CH 62	C6C2	GF column 6 (top-corner) longitude		
CH 63	C6D1	GF column 6 (bottom-center) longitude		
CH 64	C6D2	GF column 6 (top-center) longitude		
CH 65	C6E1	GF column 6 (bottom) hoop		
CH 66	C6E2	GF column 6 (center) hoop		
CH 67	C6E3	GF column 6(top) hoop		
CH 68	C6F1	GF column 6 (bottom) tie		
CH 69	C6F2	GF column 6 (center) tie		
CH 70	C6F3	GF column 6 (top) tie		

Channel	Sensor ID	Location	Description	Note
CH 71	B3A1	1F beam 5(near column) longitude		
CH 72	B3A2	1F beam 5(far away column) longitude		
CH 73	B3C1	1F beam 5(middle-center) longitude		
CH 74	B3D1	1F beam 5(middle-beside) longitude		
CH 75	B1E1	1F beam 2(far away column) stirrup		
CH 76	B1E2	1F beam 2(near column) stirrup		
CH 77	C1A3	under 1F column 1 (bottom) longitude		
CH 78	C1A4	under 1F column 1 (top) longitude		
CH 79	C1A5	above 1F column 1 (bottom) longitude		
CH 80	C1A6	above 1F column 1 (top) longitude		
CH 81	C1B3	under 1F column 1 (bottom-corner) longitude		
CH 82	C1B4	under 1F column 1 (top-corner) longitude		
CH 83	C1C3	under 1F column 1 (bottom) longitude		
CH 84	C1C4	under 1F column 1 (top) longitude		
CH 85	C1C5	above 1F column 1 (bottom) longitude		
CH 86	C1C6	above 1F column 1 (top) longitude		
CH 87	C1D3	under 1F column 1 (bottom-center) longitude		
CH 88	C1D4	under 1F column 1 (top-center) longitude		
CH 89	C1E4	under 1F column 1 (bottom) hoop		
CH 90	C1E5	under 1F column 1 (center) hoop		
CH 91	C1E6	under 1F column 1 (top) hoop		
CH 92	C1E7	above 1F column 1 (bottom) hoop		
CH 93	C1E8	above 1F column 1 (bottom-center) hoop		
CH 94	C1E9	above 1F column 1 (top-center) hoop		
CH 95	C1E10	above 1F column 1 (top) hoop		
CH 96	C1F4	under 1F column 1 (bottom) tie		
CH 97	C1F5	under 1F column 1 (center) tie		
CH 98	C1F6	under 1F column 1 (top) tie		
CH 99	B4A1	1F beam 4(near column) longitude		
CH 100	B4A2	1F beam 4(far away column) longitude		
CH 101	B4C1	1F beam 4(middle-center) longitude		
CH 102	B4D1	1F beam 4(middle-beside) longitude		
CH 103	B1E3	1F beam 1(far away column) stirrup		
CH 104	B1E4	1F beam 1(near column) stirrup		
CH 105	B2E1	1F beam 2(near column) stirrup		
CH 106	B2E2	1F beam 2(far away column) stirrup		
CH 107	C2A3	under 1F column 2 (bottom) longitude		
CH 108	C2A4	under 1F column 2 (top) longitude		
CH 109	C2A5	above 1F column 2 (bottom) longitude		
CH 110	C2A6	above 1F column 2 (top) longitude		

Channel	Sensor ID	Location	Description	Note
CH 111	C2B3	under 1F column 2 (bottom-corner) longitude		
CH 112	C2B4	under 1F column 2 (top-corner) longitude		
CH 113	C2C3	under 1F column 2 (bottom) longitude		
CH 114	C2C4	under 1F column 2 (top) longitude		
CH 115	C2C5	above 1F column 2 (bottom) longitude		
CH 116	C2C6	above 1F column 2 (top) longitude		
CH 117	C2D3	under 1F column 2 (bottom-center) longitude		
CH 118	C2D4	under 1F column 2 (top-center) longitude		
CH 119	C2E4	under 1F column 2 (bottom) hoop		
CH 120	C2E5	under 1F column 2 (center) hoop		
CH 121	C2E6	under 1F column 2 (top) hoop		
CH 122	C2E7	above 1F column 2 (bottom) hoop		
CH 123	C2E8	above 1F column 2 (bottom-center) hoop		
CH 124	C2E9	above 1F column 2 (top-center) hoop		
CH 125	C2E10	above 1F column 2 (top) hoop		
CH 126	C2F4	under 1F column 2 (bottom) tie		
CH 127	C2F5	under 1F column 2 (center) tie		
CH 128	C2F6	under 1F column 2 (top) tie		
CH 129	B5A1	1F beam 5(near column) longitude		
CH 130	B5A2	1F beam 5(far away column) longitude		
CH 131	B5C1	1F beam 5(middle-center) longitude		
CH 132	B5D1	1F beam 5(middle-beside) longitude		
CH 133	B2E3	1F beam 2(far away column) stirrup		
CH 134	B2E4	1F beam 2(near column) stirrup		
CH 135	C3A3	under 1F column 3 (bottom) longitude		
CH 136	C3A4	under 1F column 3 (top) longitude		
CH 137	C3A5	above 1F column 3 (bottom) longitude		
CH 138	C3A6	above 1F column 3 (top) longitude		
CH 139	C3B3	under 1F column 3 (bottom-corner) longitude		
CH 140	C3B4	under 1F column 3 (top-corner) longitude		
CH 141	C3C3	under 1F column 3 (bottom) longitude		
CH 142	C3C4	under 1F column 3 (top) longitude		
CH 143	C3C5	above 1F column 3 (bottom) longitude		
CH 144	C3C6	above 1F column 3 (top) longitude		
CH 145	C3D3	under 1F column 3 (bottom-center) longitude		
CH 146	C3D4	under 1F column 3 (top-center) longitude		
CH 147	C3E4	under 1F column 3 (bottom) hoop		
CH 148	C3E5	under 1F column 3 (center) hoop		
CH 149	C3E6	under 1F column 3 (top) hoop		
CH 150	C3E7	above 1F column 3 (bottom) hoop		



Channel	Sensor ID	Location	Description	Note
CH 151	C3E8	above 1F column 3 (bottom-center) hoop		
CH 152	C3E9	above 1F column 3 (top-center) hoop		
CH 153	C3E10	above 1F column 3 (top) hoop		
CH 154	C3F4	under 1F column 3 (bottom) tie		
CH 155	C3F5	under 1F column 3 (center) tie		
CH 156	C3F6	under 1F column 3 (top) tie		
CH 157	B3B1	1F beam 3(near column) longitude		
CH 158	B3B2	1F beam 3(far away column) longitude		
CH 159	B6E1	1F beam 6 stirrup		
CH 160	B4B1	1F beam 4(near column) longitude		
CH 161	B4B2	1F beam 4(far away column) longitude		
CH 162	B6E2	1F beam 6 stirrup		
CH 163	B7E1	1F beam 7 stirrup		
CH 164	C5A3	under 1F column 5 (bottom) longitude		
CH 165	C5A4	under 1F column 5 (top) longitude		
CH 166	C5A5	above 1F column 5 (bottom) longitude		
CH 167	C5A6	above 1F column 5 (top) longitude		
CH 168	C5B3	under 1F column 5 (bottom-corner) longitude		
CH 169	C5B4	under 1F column 5 (top-corner) longitude		
CH 170	C5C3	under 1F column 5 (bottom) longitude		
CH 171	C5C4	under 1F column 5 (top) longitude		
CH 172	C5C5	above 1F column 5 (bottom) longitude		
CH 173	C5C6	above 1F column 5 (top) longitude		
CH 174	C5D3	under 1F column 5 (bottom-center) longitude		
CH 175	C5D4	under 1F column 5 (top-center) longitude		
CH 176	C5E4	under 1F column 5 (bottom) hoop		
CH 177	C5E5	under 1F column 5 (center) hoop		
CH 178	C5E6	under 1F column 5 (top) hoop		
CH 179	C5E7	above 1F column 5 (bottom) hoop		
CH 180	C5E8	above 1F column 5 (bottom-center) hoop		
CH 181	C5E9	above 1F column 5 (top-center) hoop		
CH 182	C5E10	above 1F column 5 (top) hoop		
CH 183	C5F4	under 1F column 5 (bottom) tie		
CH 184	C5F5	under 1F column 5 (center) tie		
CH 185	C5F6	under 1F column 5 (top) tie		
CH 186	B5B1	1F beam 5(near column) longitude		
CH 187	B5B2	1F beam 5(far away column) longitude		
CH 188	B7E2	1F beam 7 stirrup		
CH 189	C6A3	under 1F column 6 (bottom) longitude		
CH 190	C6A4	under 1F column 6 (top) longitude		

Channel	Sensor ID	Location	Description	Note
CH 191	C6A5	above 1F column 6 (bottom) longitude		
CH 192	C6A6	above 1F column 6 (top) longitude		
CH 193	C6B3	under 1F column 6 (bottom-corner) longitude		
CH 194	C6B4	under 1F column 6 (top-corner) longitude		
CH 195	C6C3	under 1F column 6 (bottom) longitude		
CH 196	C6C4	under 1F column 6 (top) longitude		
CH 197	C6C5	above 1F column 6 (bottom) longitude		
CH 198	C6C6	above 1F column 6 (top) longitude		
CH 199	C6D3	under 1F column 6 (bottom-center) longitude		
CH 200	C6D4	under 1F column 6 (top-center) longitude		
CH 201	C6E4	under 1F column 6 (bottom) hoop		
CH 202	C6E5	under 1F column 6 (center) hoop		
CH 203	C6E6	under 1F column 6 (top) hoop		
CH 204	C6E7	above 1F column 6 (bottom) hoop		
CH 205	C6E8	above 1F column 6 (bottom-center) hoop		
CH 206	C6E9	above 1F column 6 (top-center) hoop		
CH 207	C6E10	above 1F column 6 (top) hoop		
CH 208	C6F4	under 1F column 6 (bottom) tie		
CH 209	C6F5	under 1F column 6 (center) tie		
CH 210	C6F6	under 1F column 6 (top) tie		
CH 211				
CH 212				
CH 213				
CH 214				
CH 215				
CH 216				
CH 217				
CH 218				
CH 219				
CH 220				