

# Blind Analysis Contest on a 7-story Reinforced Concrete Building under Near-fault Earthquakes

Tainan, Taiwan

BAC-NCREE About Register Category Download Contacts Sign In



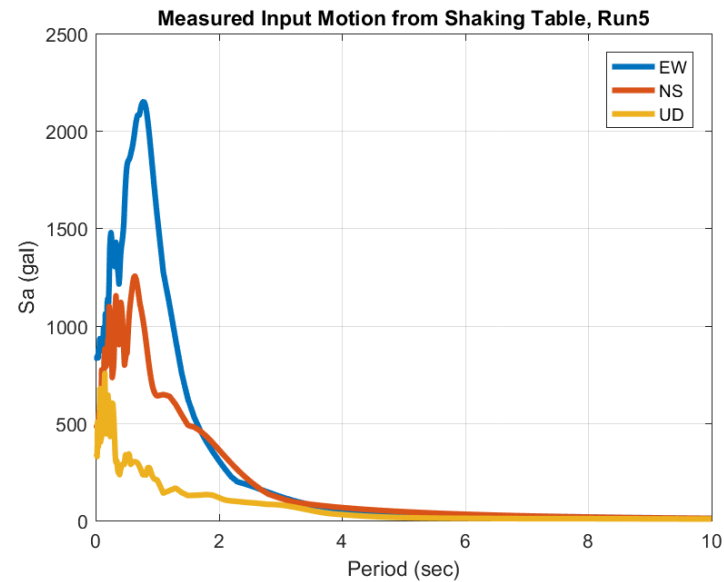
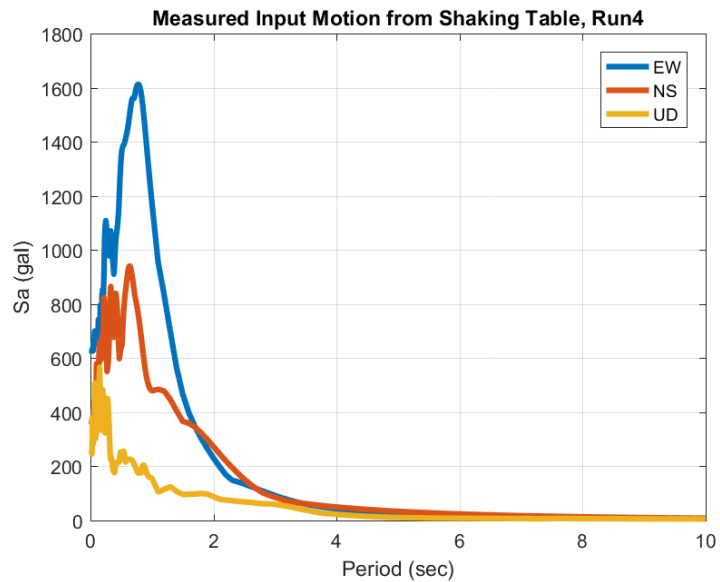
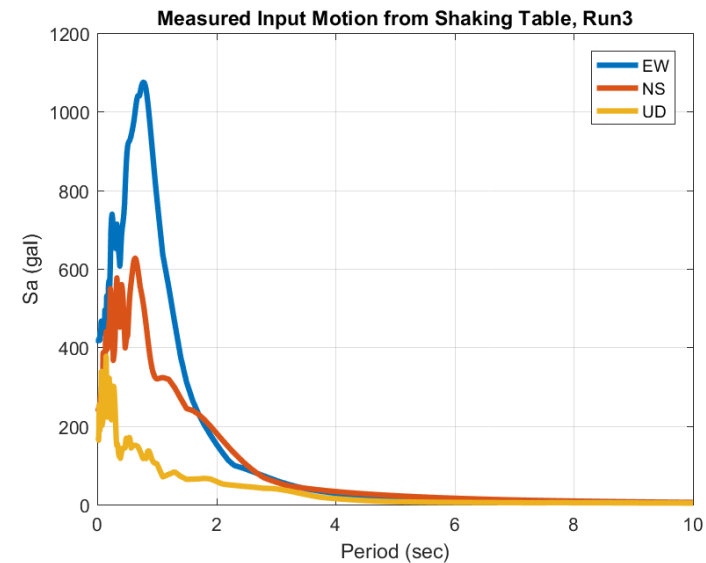
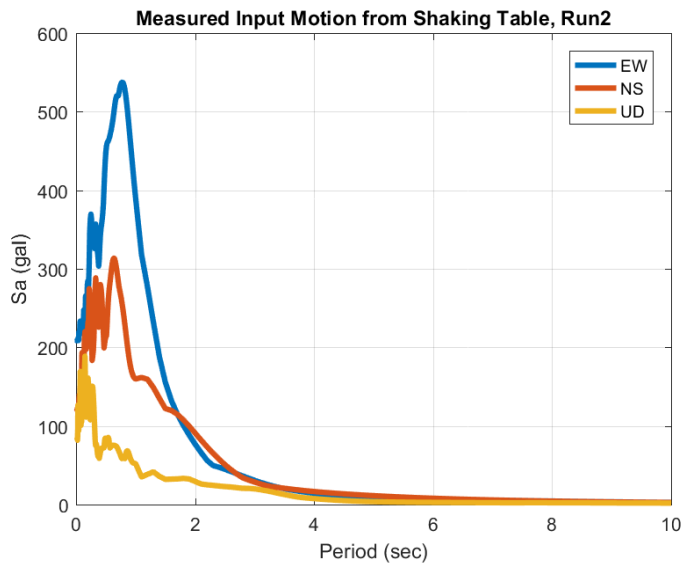
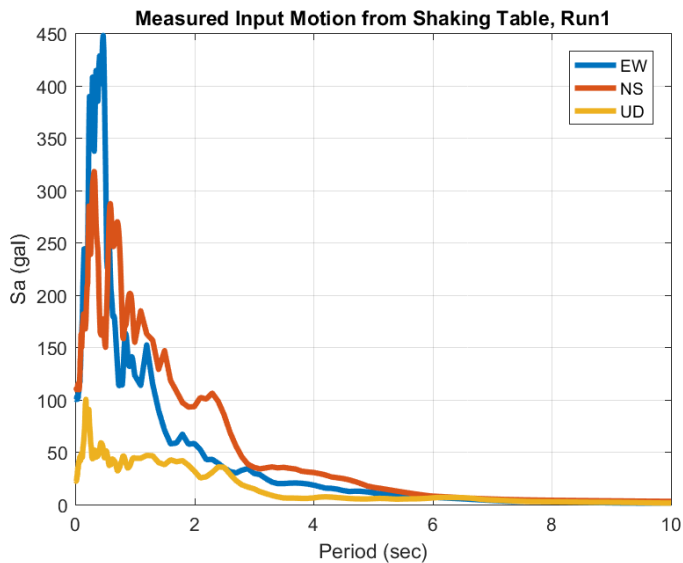
Contest website:

<http://www.ncree.org/2018AnalysisContest/>

*National Center for Research on Earthquake Engineering*

Analysis Contest on a 7-story  
Reinforced Concrete Building  
under Near-fault Earthquakes

**Results of the Contest**



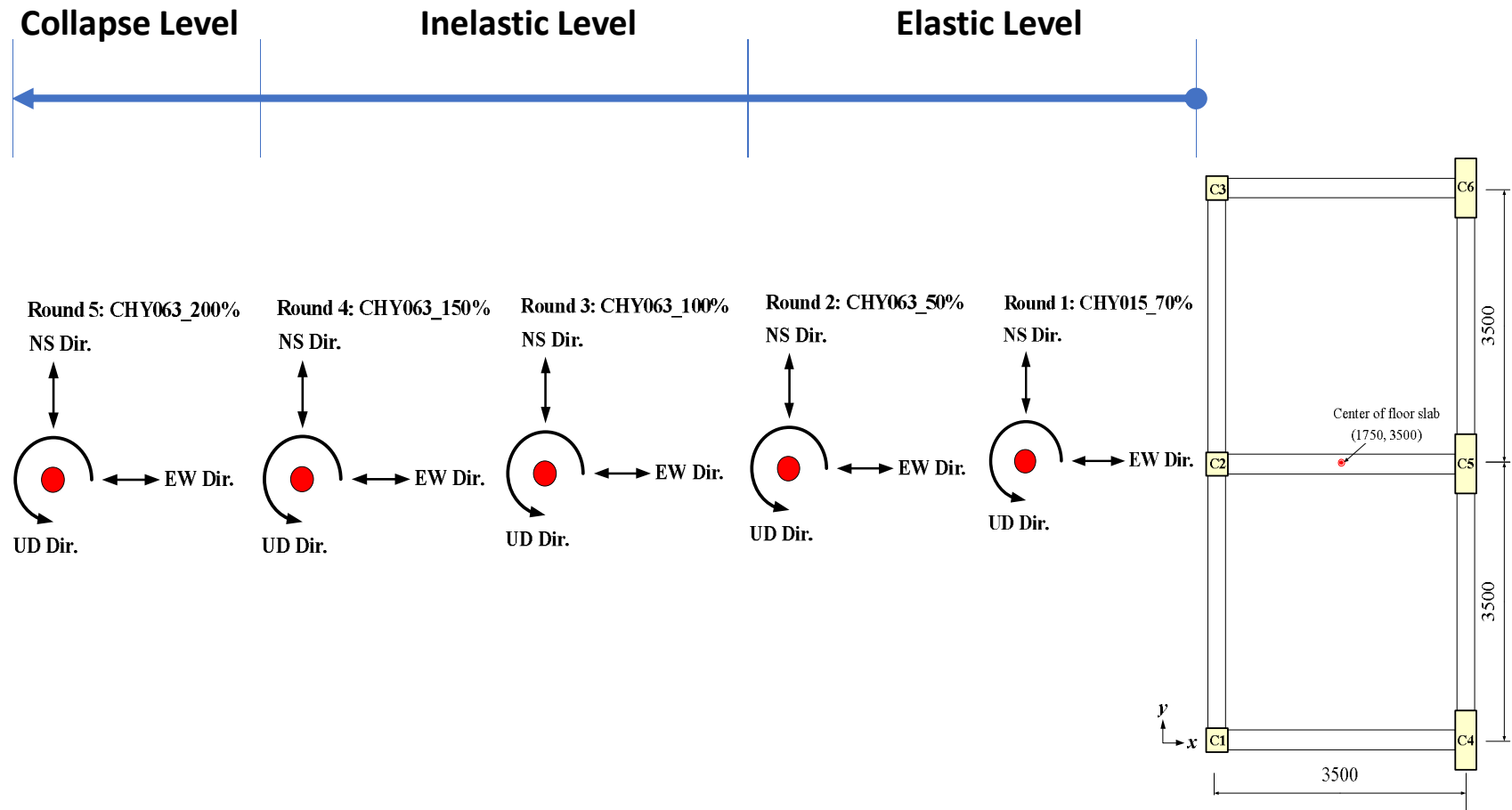
***National Center for Research on Earthquake Engineering***

# Ground motions

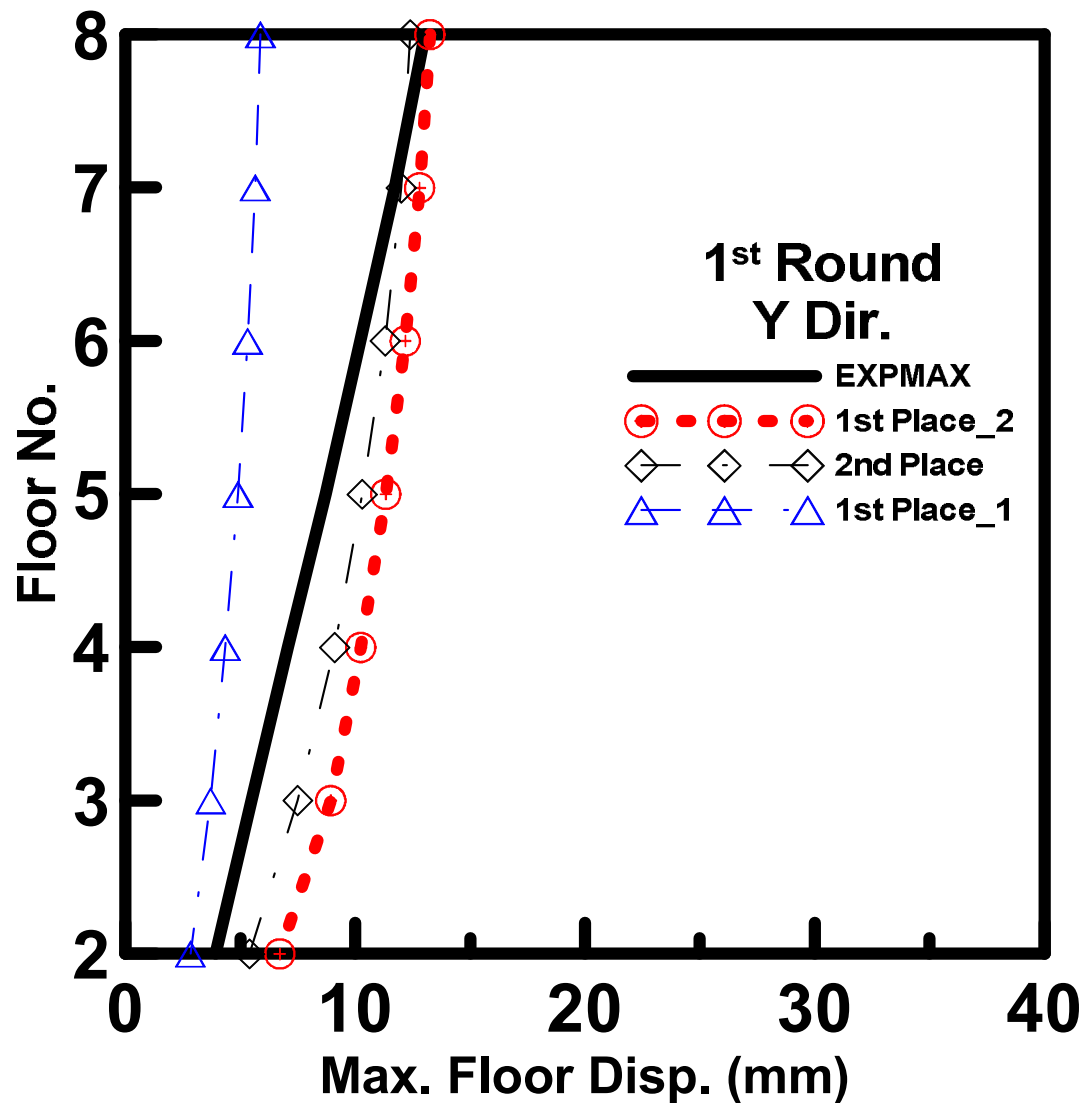
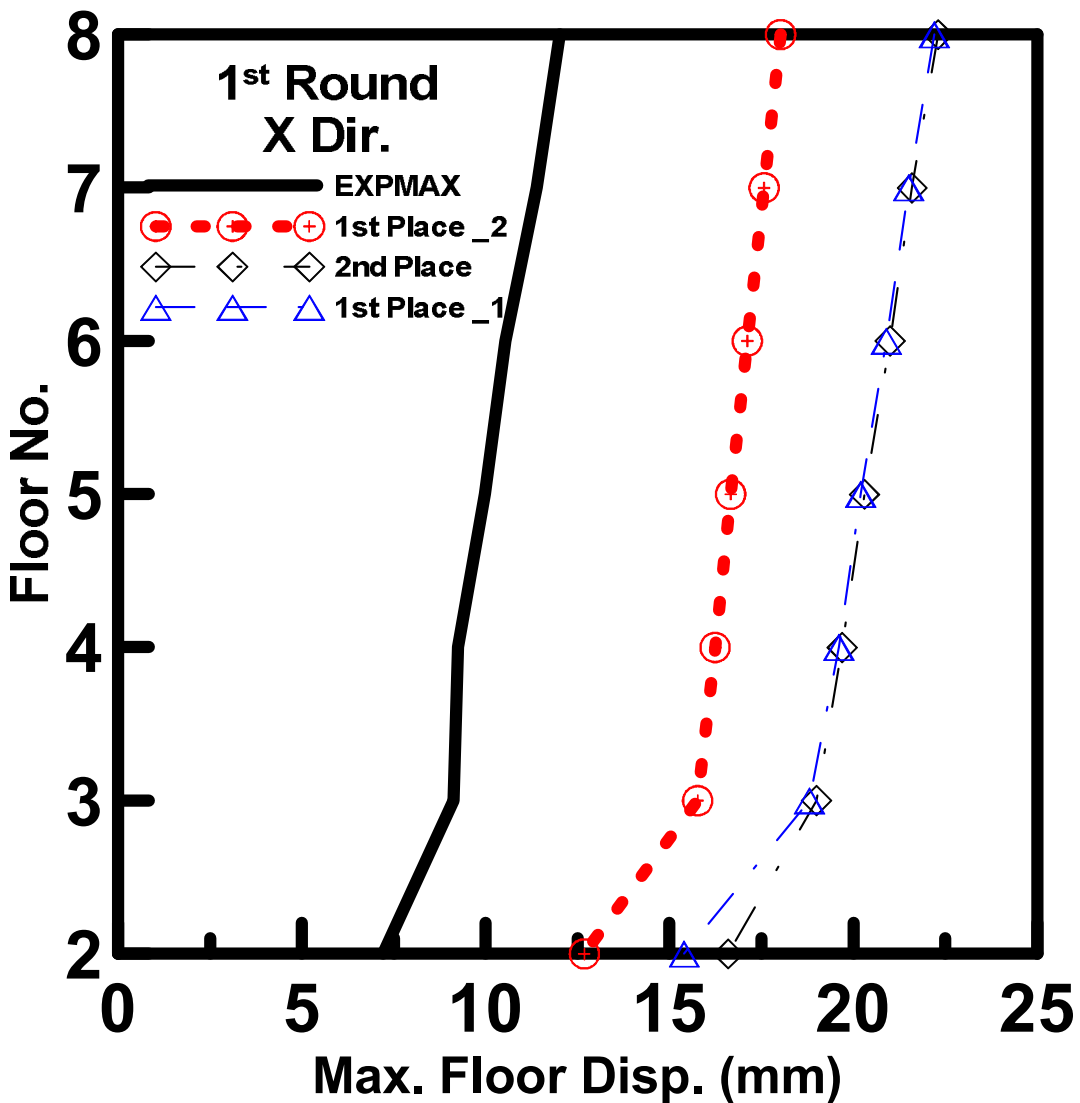
- **Elastic Level**: far-field ground motion, near fault ground motion
- **Inelastic Level**: near fault ground motions
- **Near Collapse Level**: near fault ground motions
- ' **Run 1\_CHY015\_70%** ' : Far field ground motion CHY015 scaled to 70%
- ' **Run 2\_CHY063\_50%** ' : Near field ground motion CHY063 scaled to 50%
- ' **Run 3\_CHY063\_100%** ' : Near field ground motion CHY063 in full scale
- ' **Run 4\_CHY063\_150%** ' : Near field ground motion CHY063 scaled to 150%
- ' **Run 5\_CHY063\_200%** ' : Near field ground motion CHY063 scaled to 200%

***National Center for Research on Earthquake Engineering***

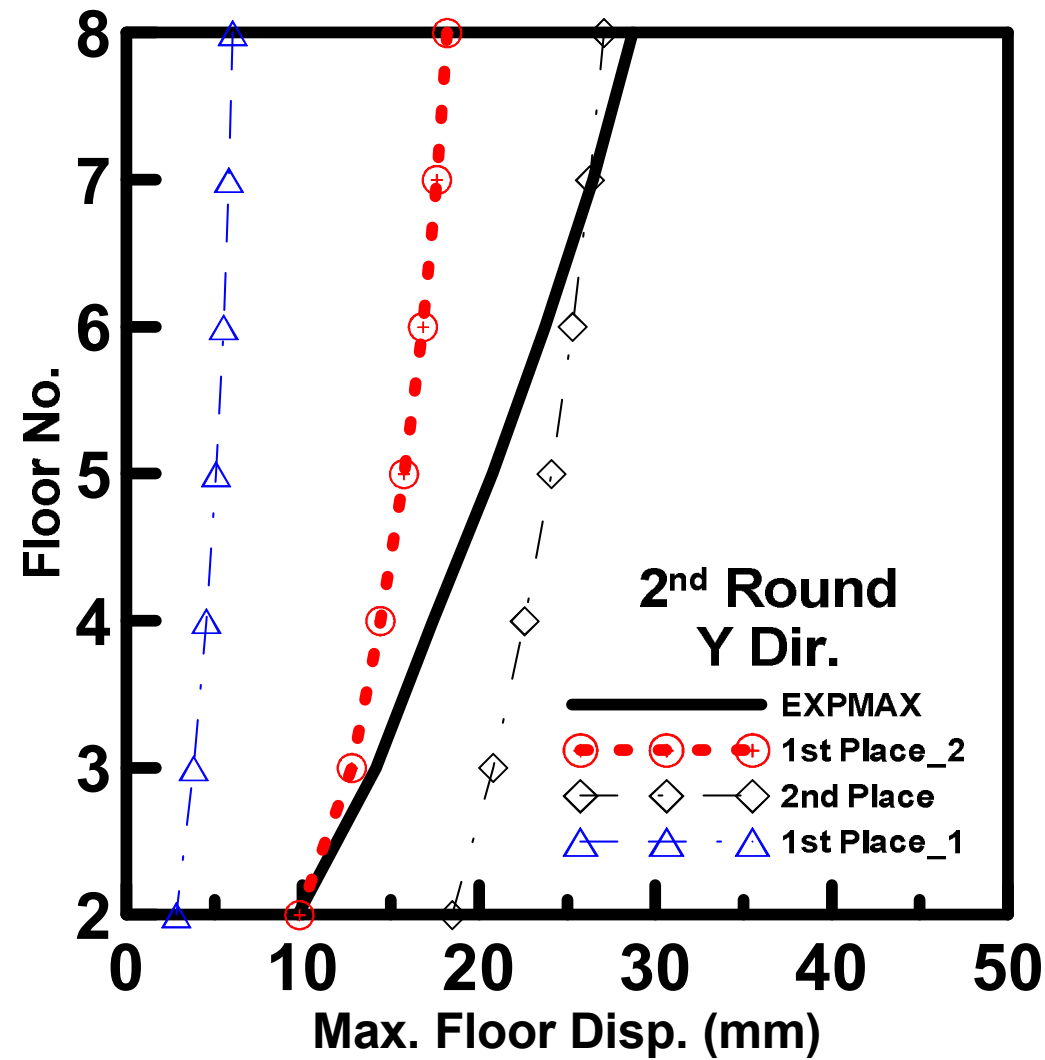
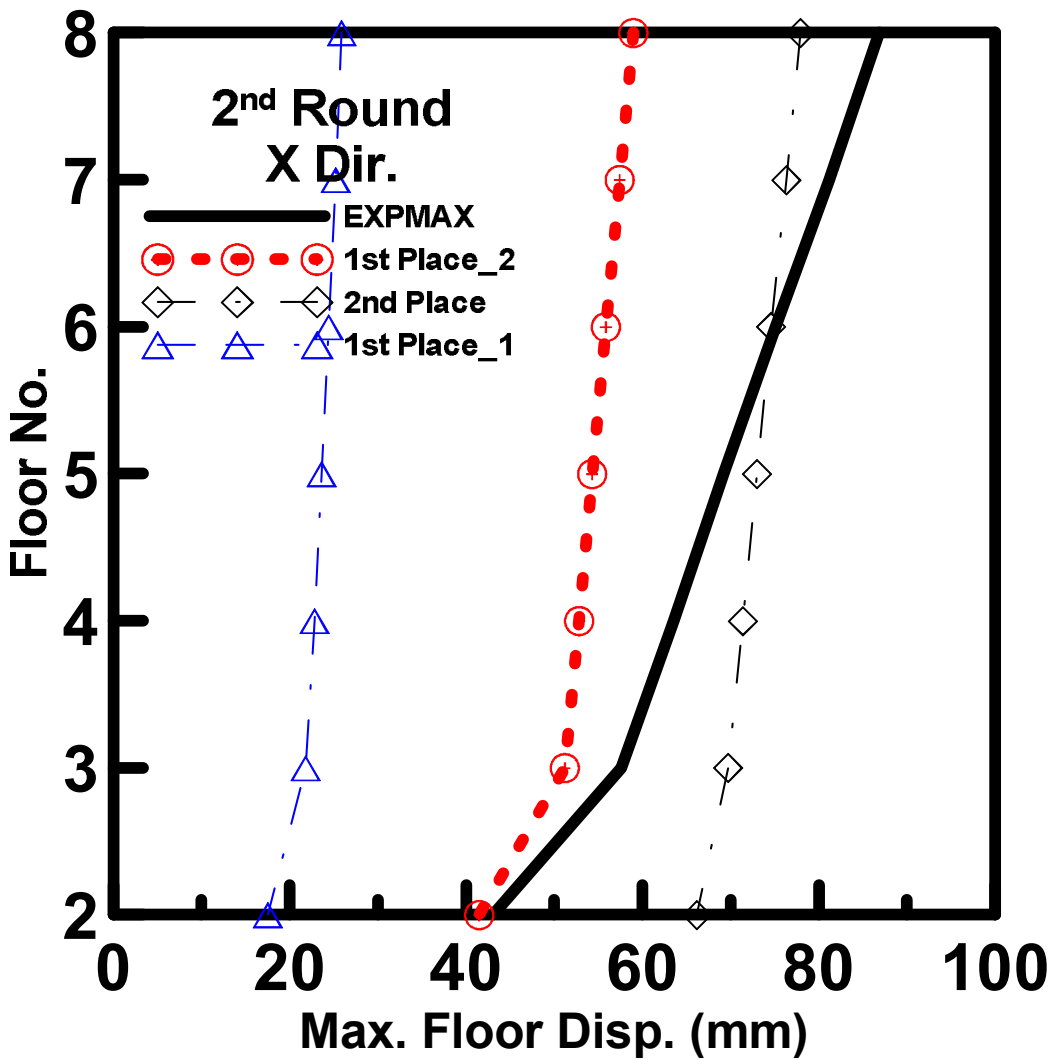
# Earthquake Scenario



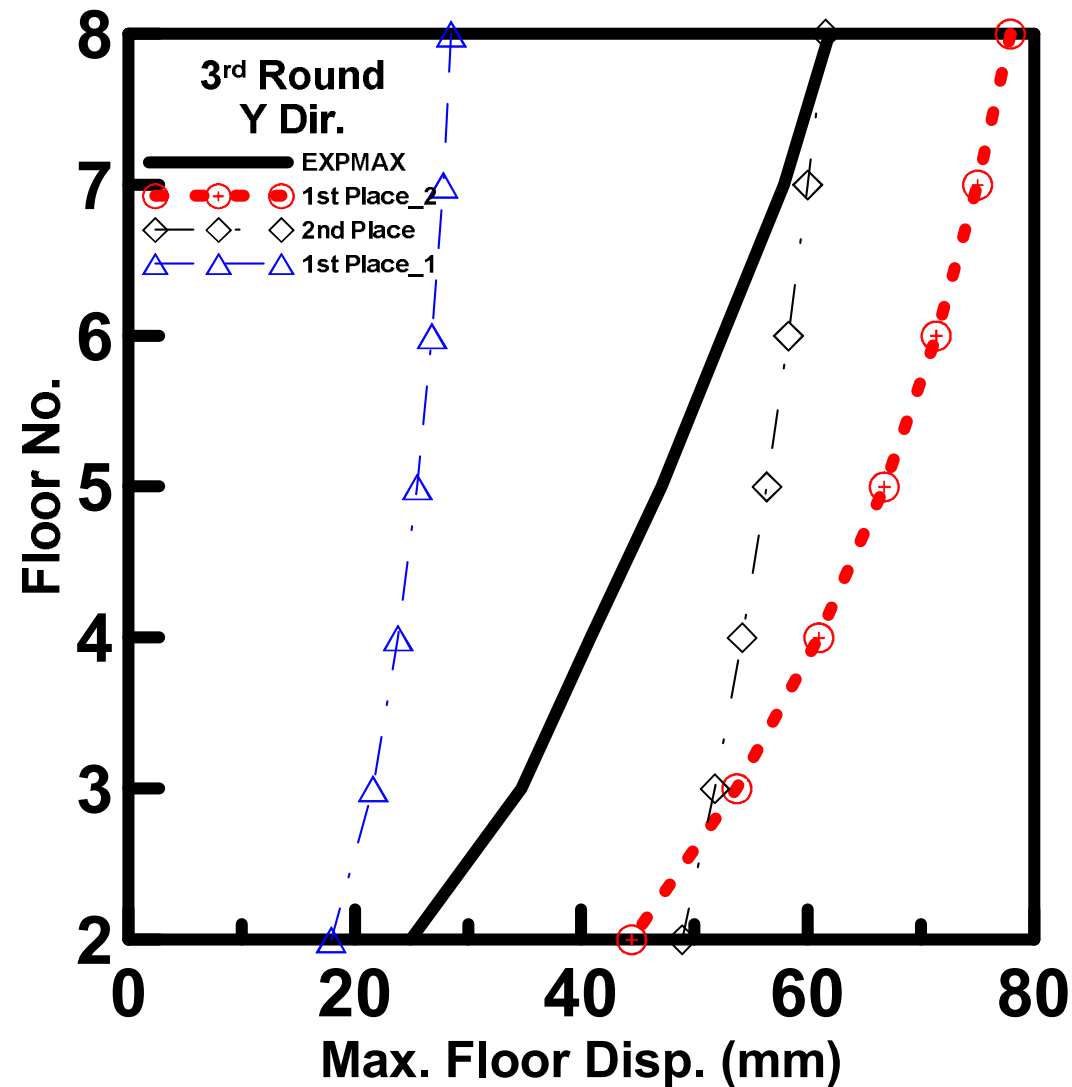
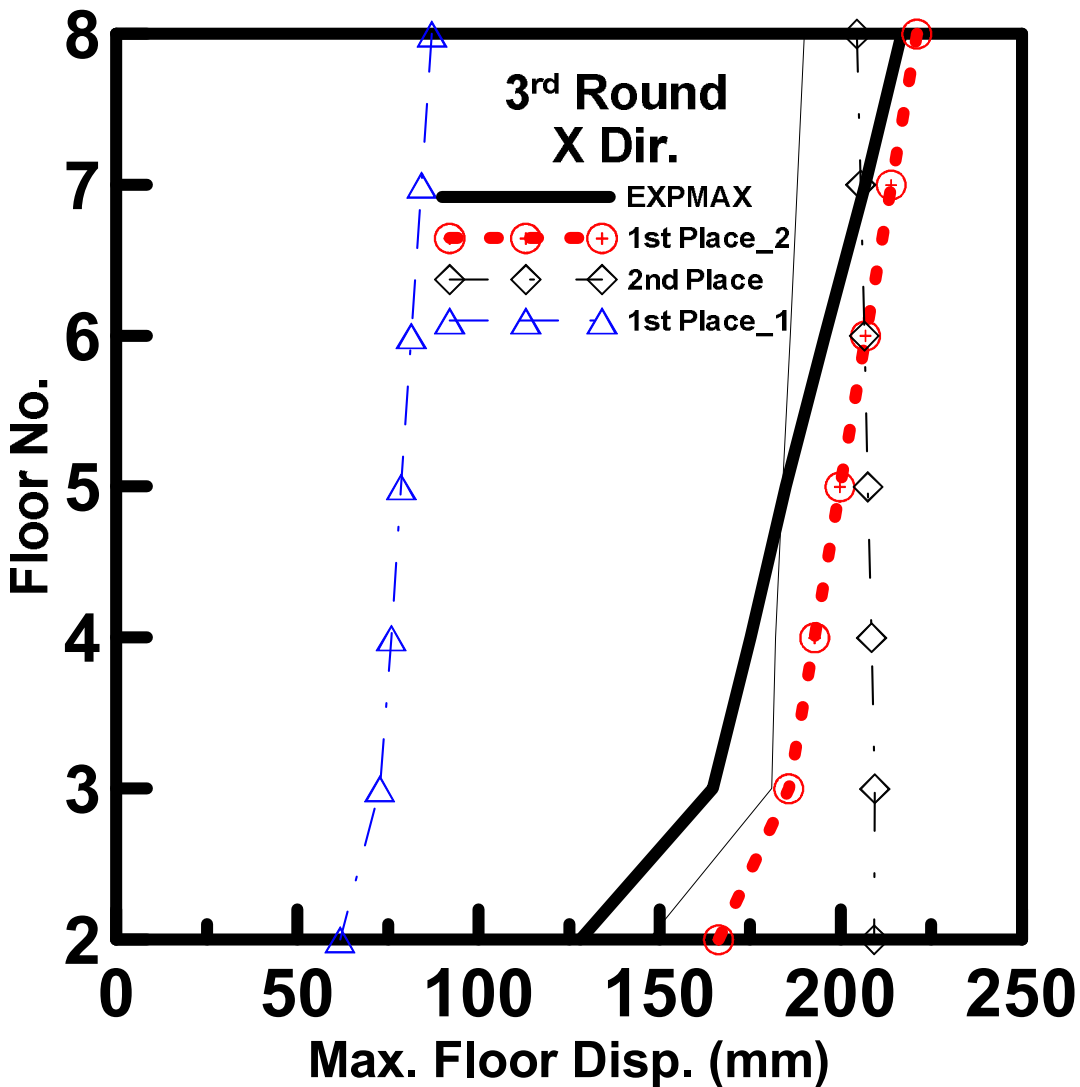
***National Center for Research on Earthquake Engineering***



*National Center for Research on Earthquake Engineering*

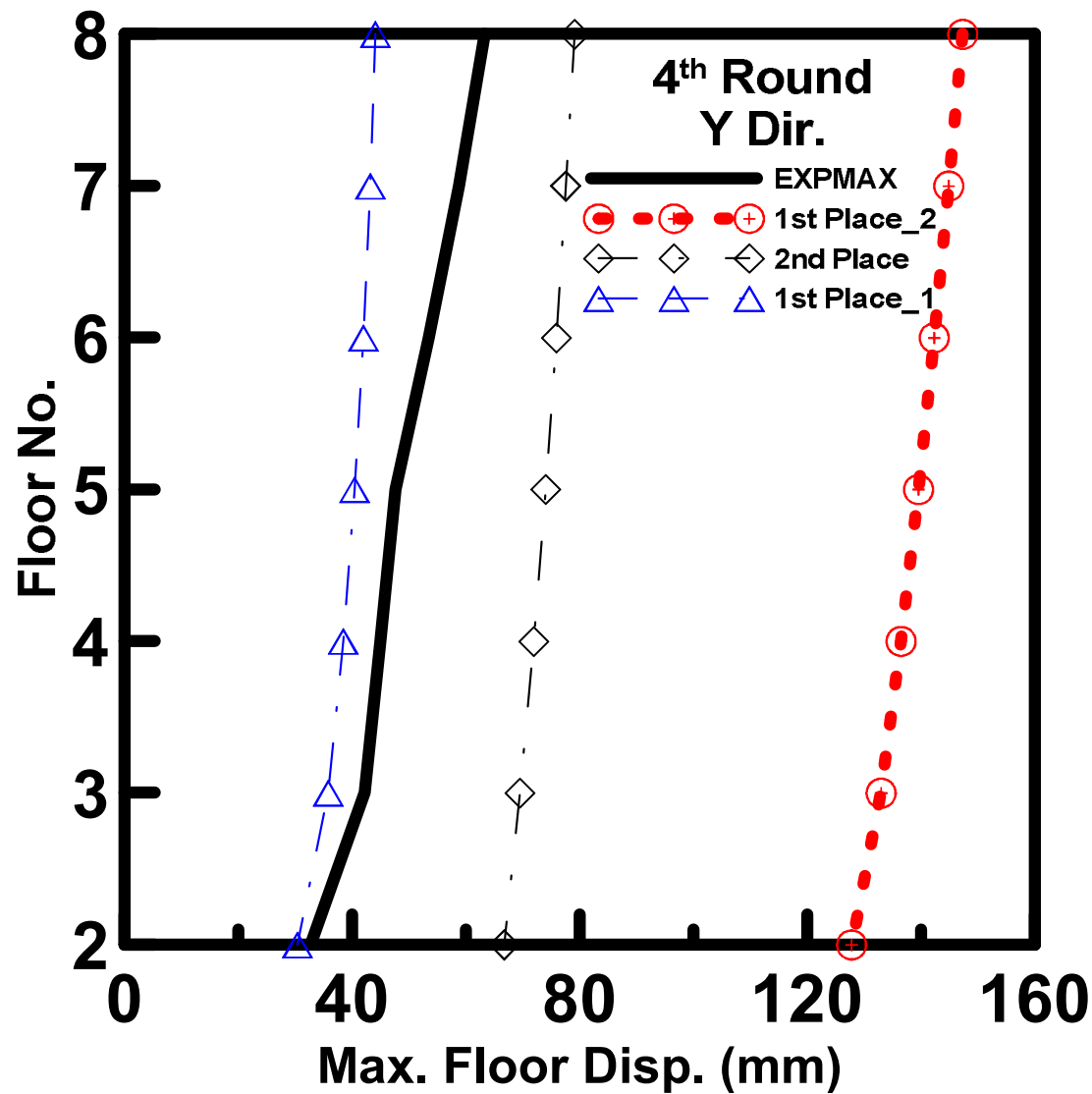
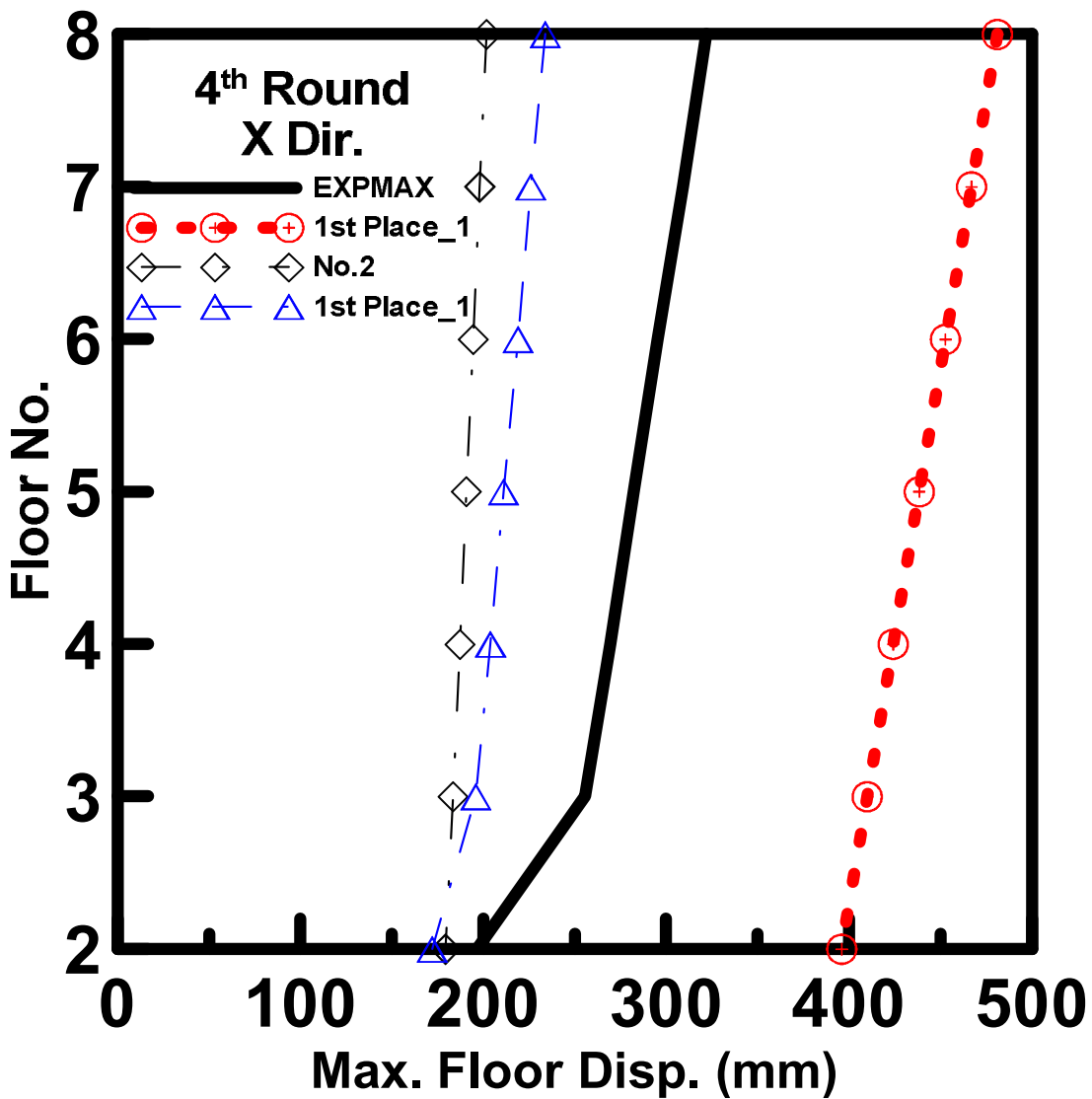


*National Center for Research on Earthquake Engineering*

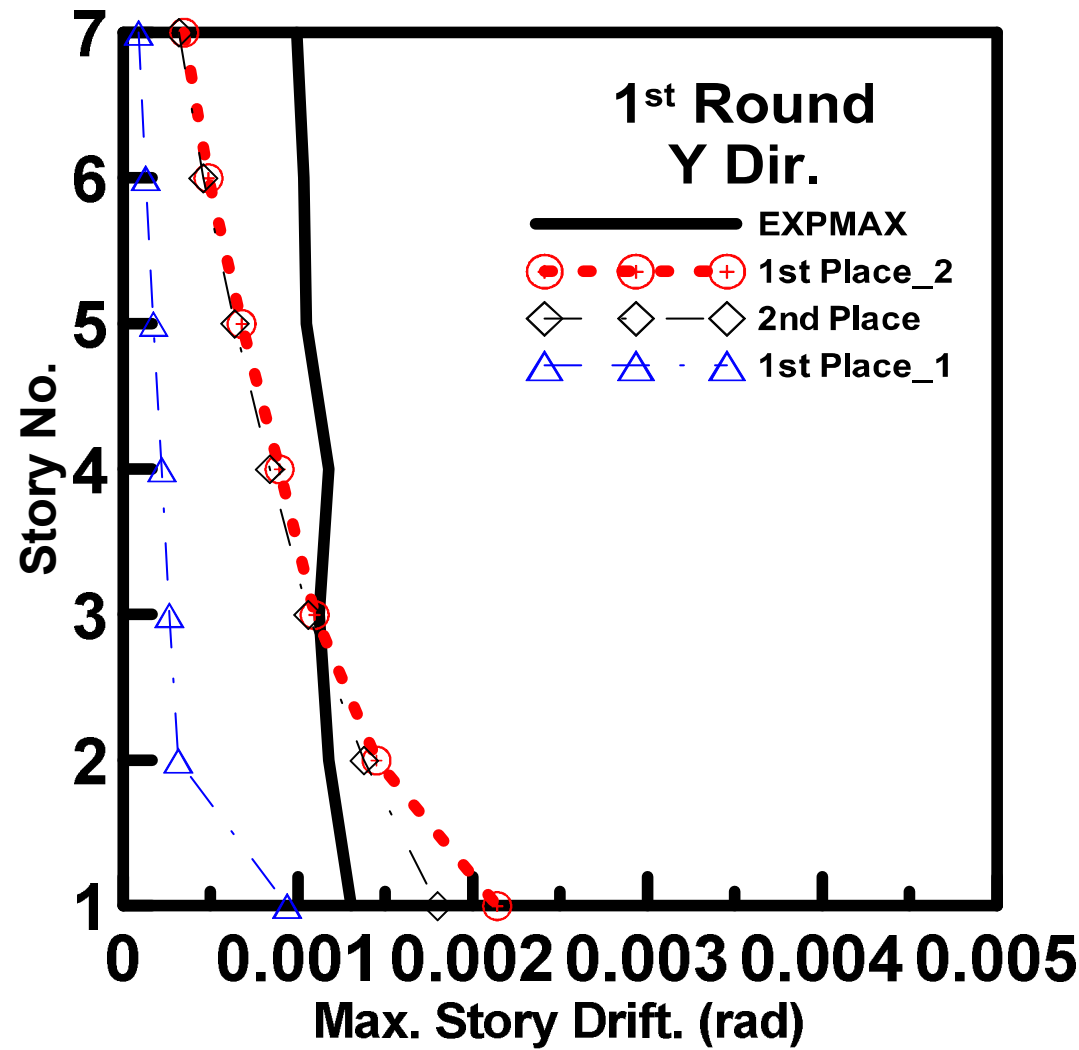
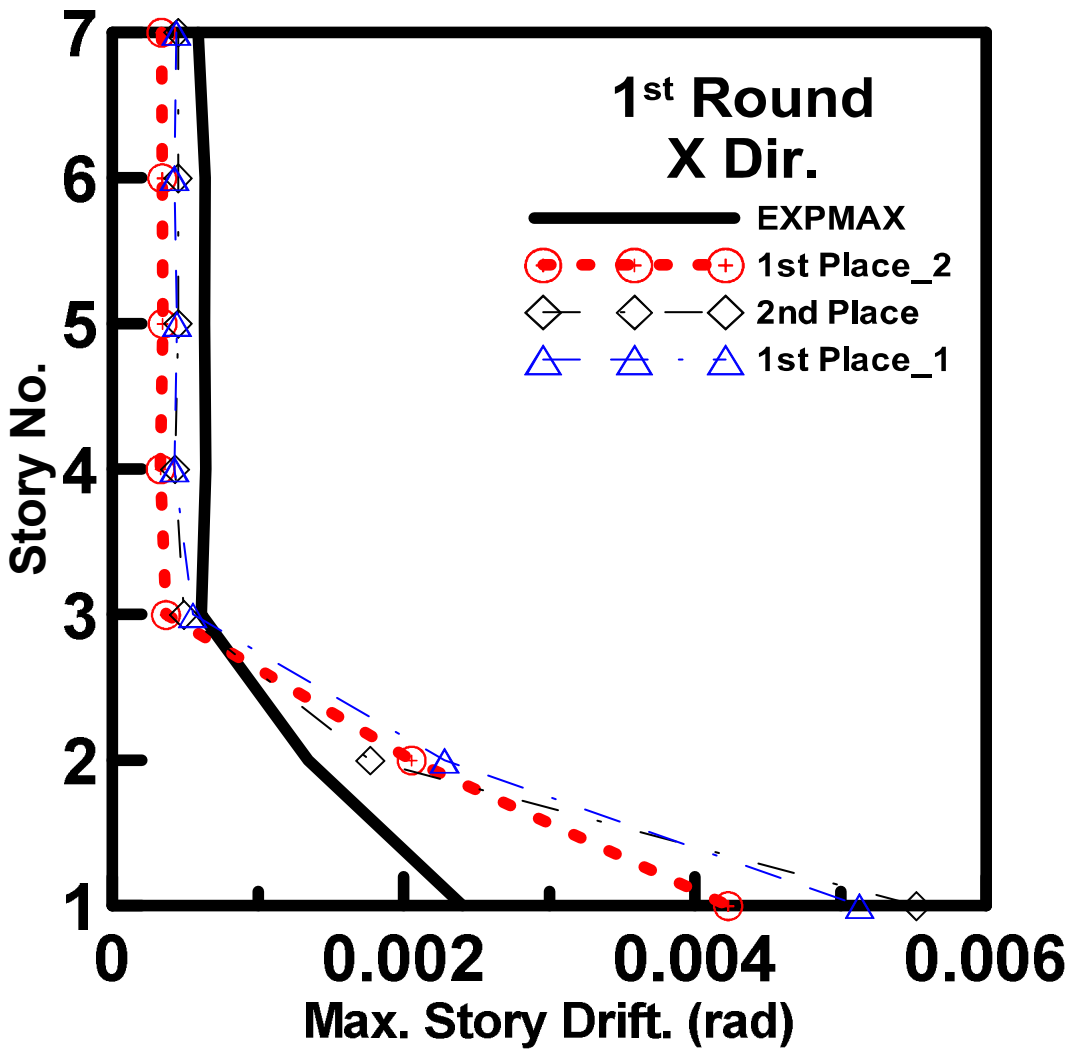


*National Center for Research on Earthquake Engineering*

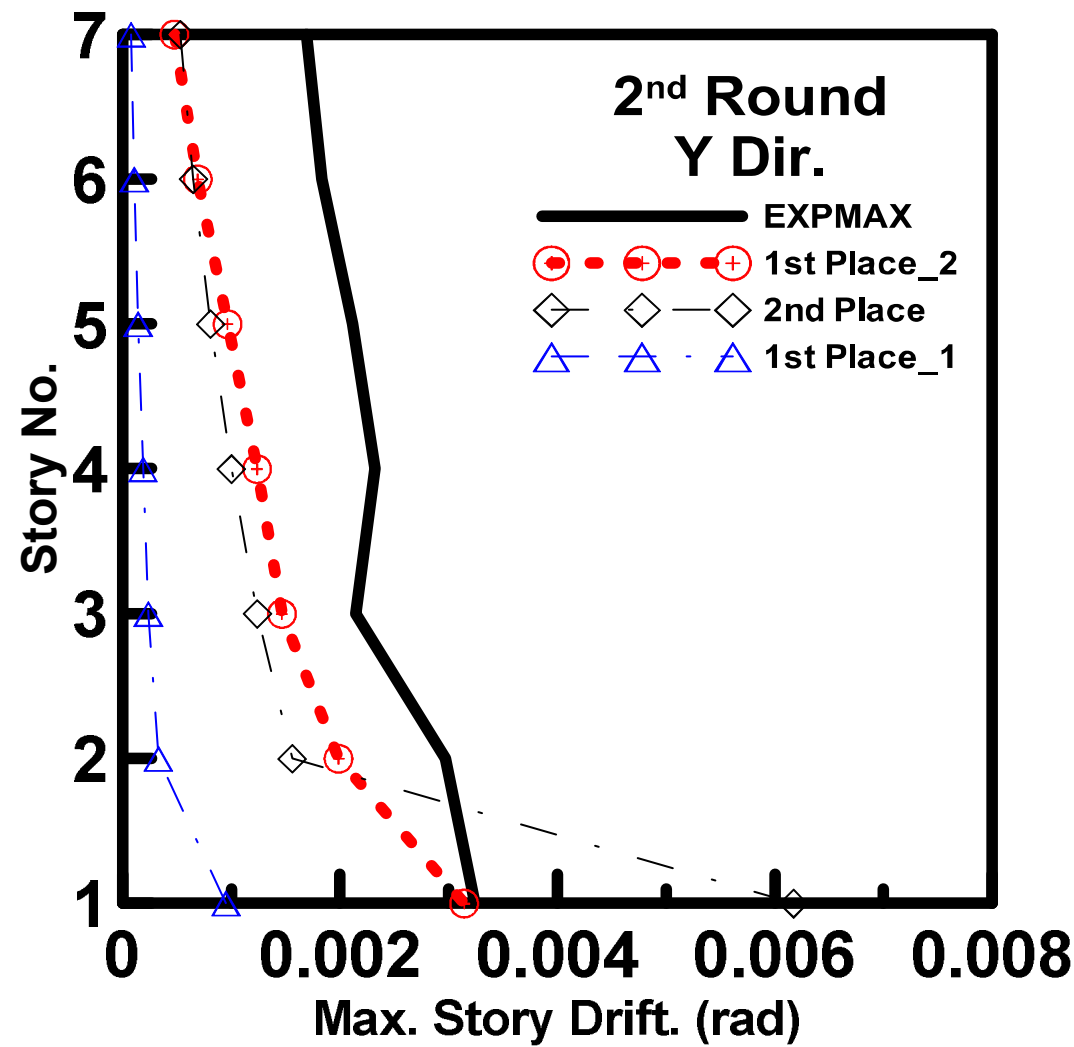
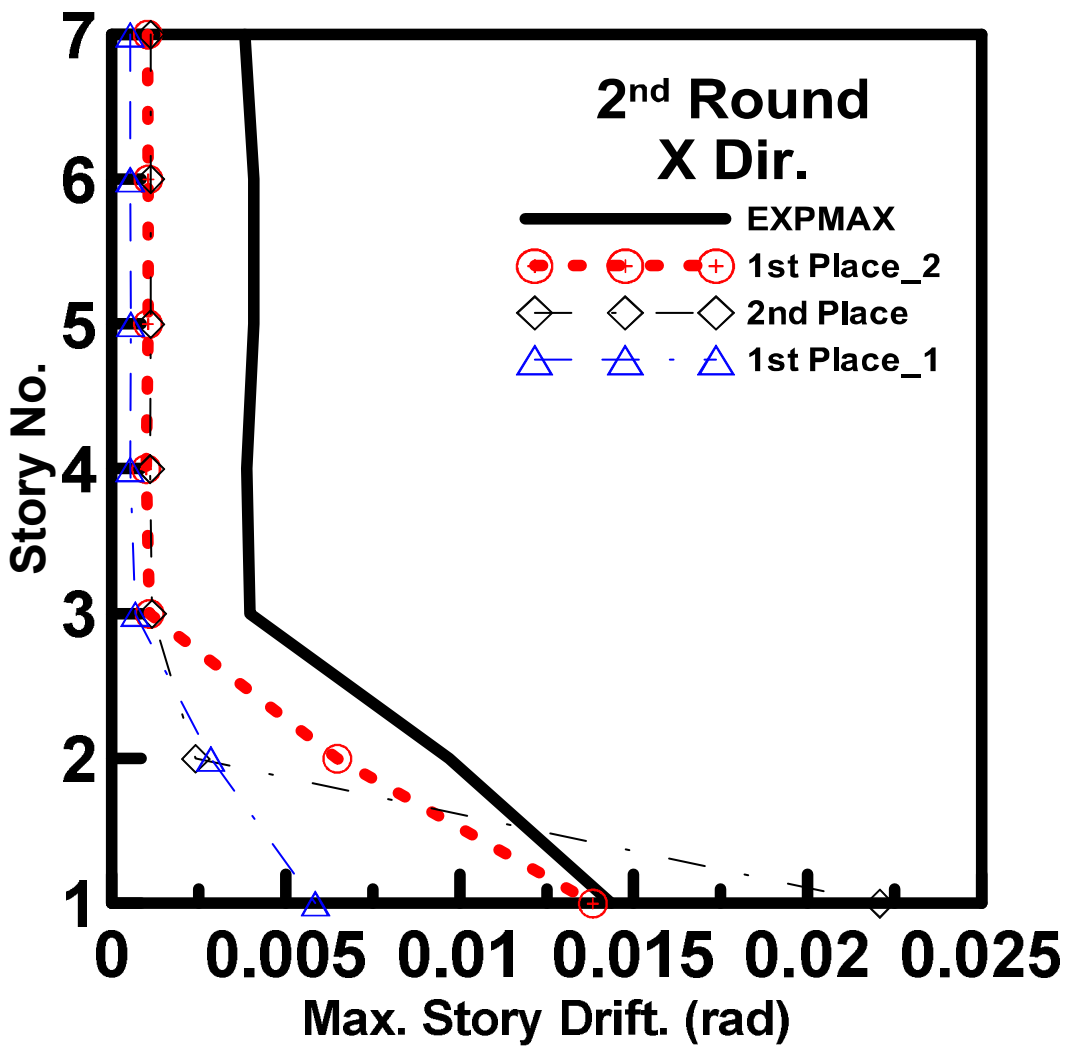




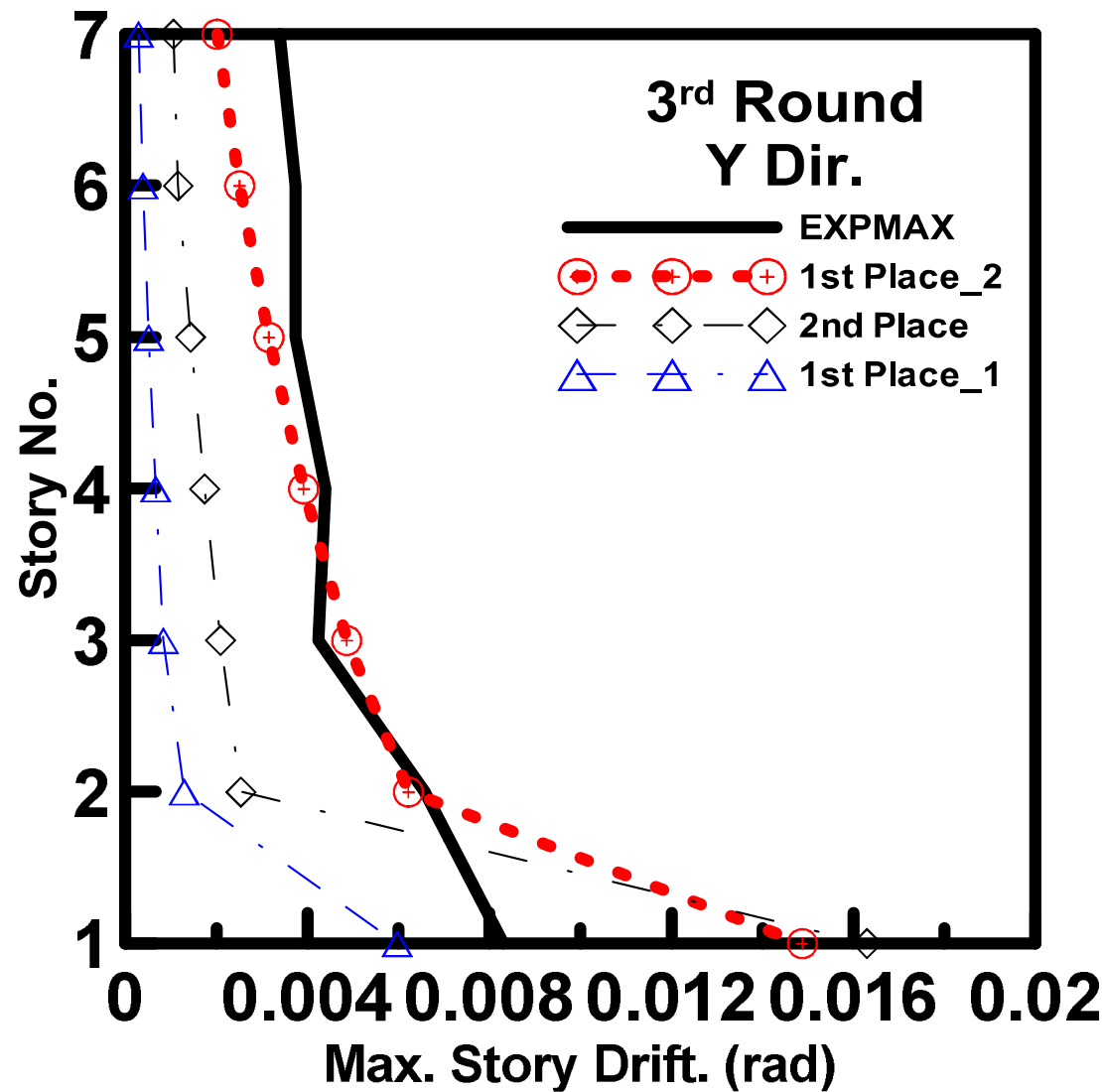
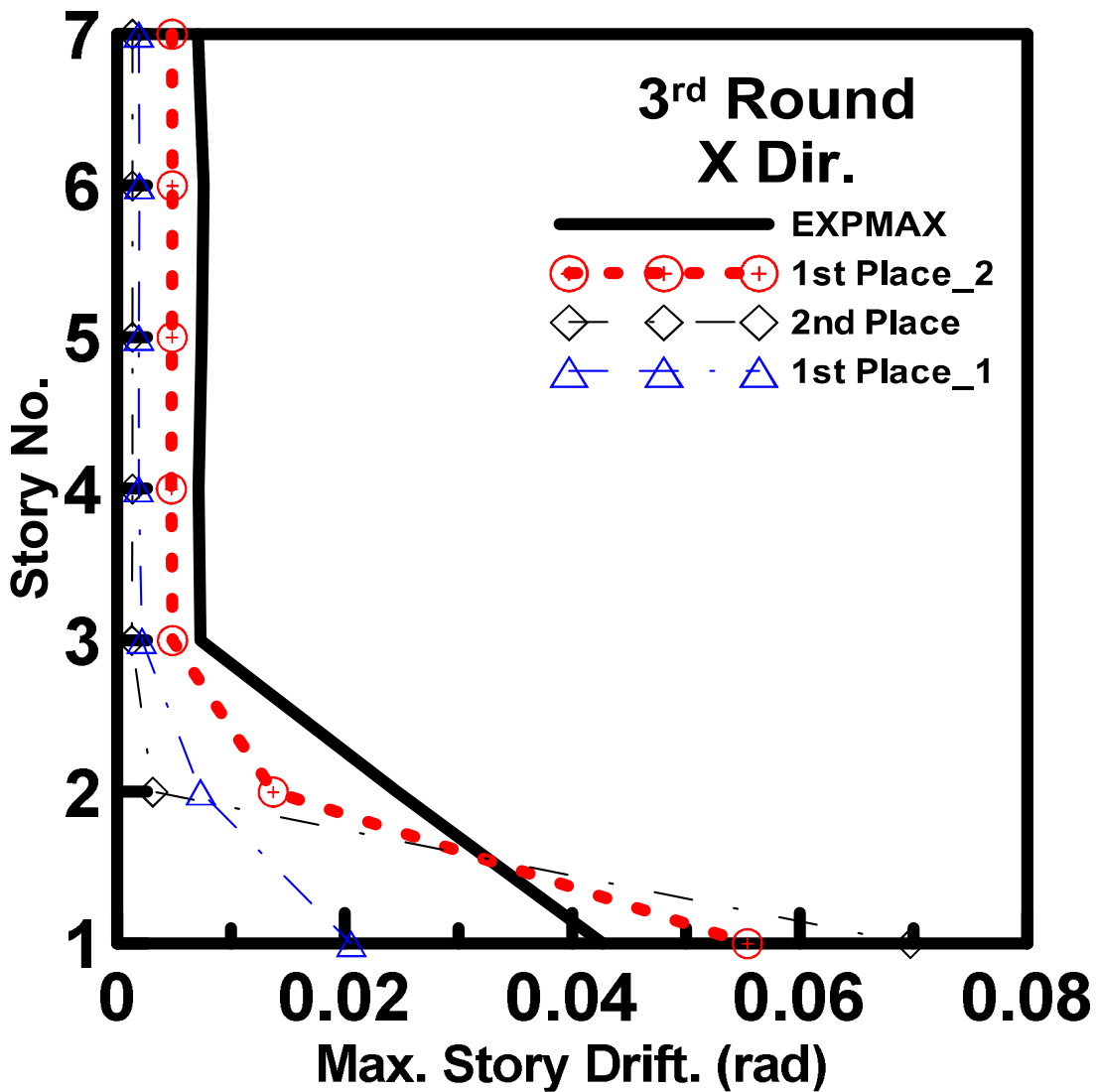
*National Center for Research on Earthquake Engineering*



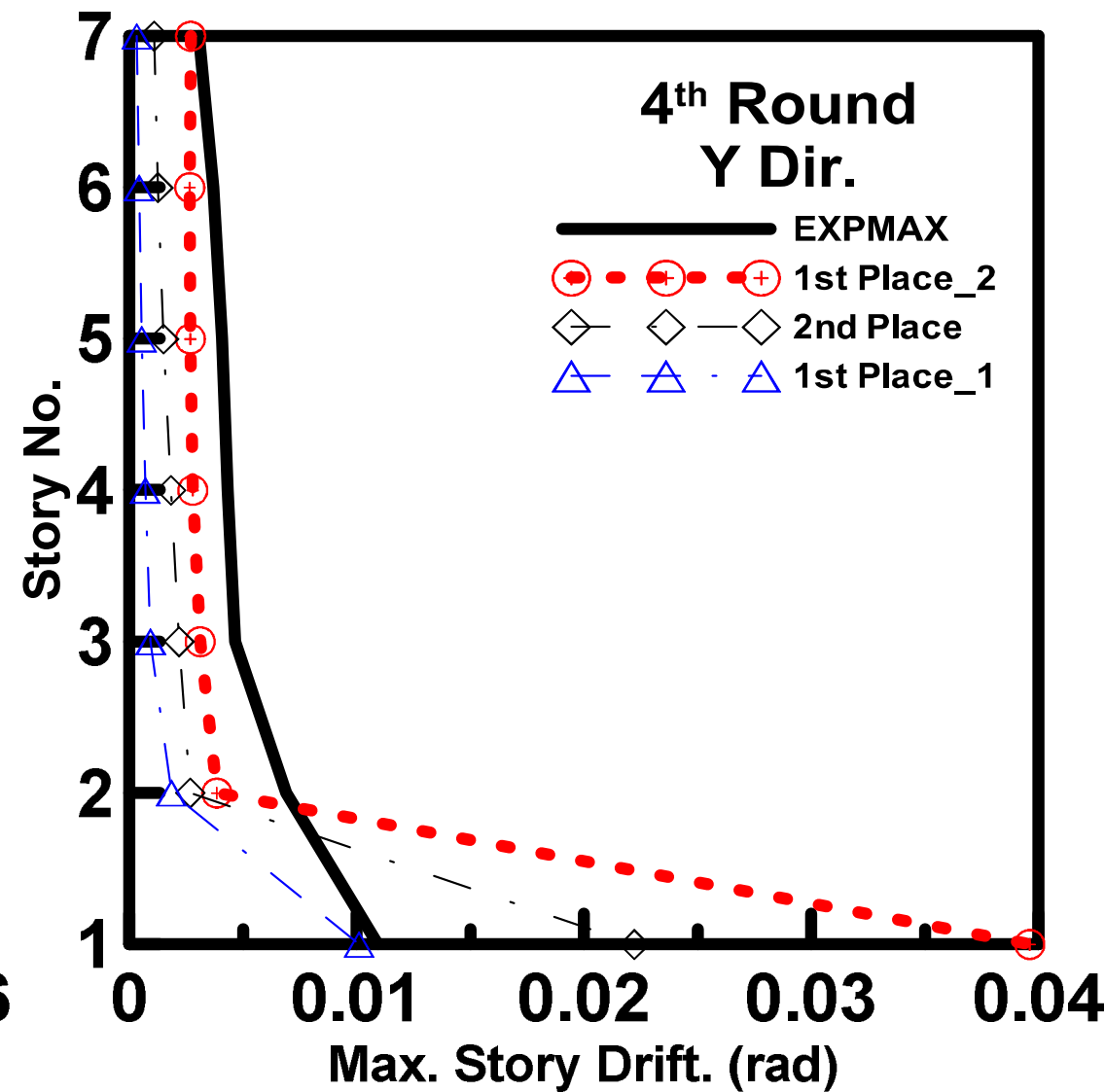
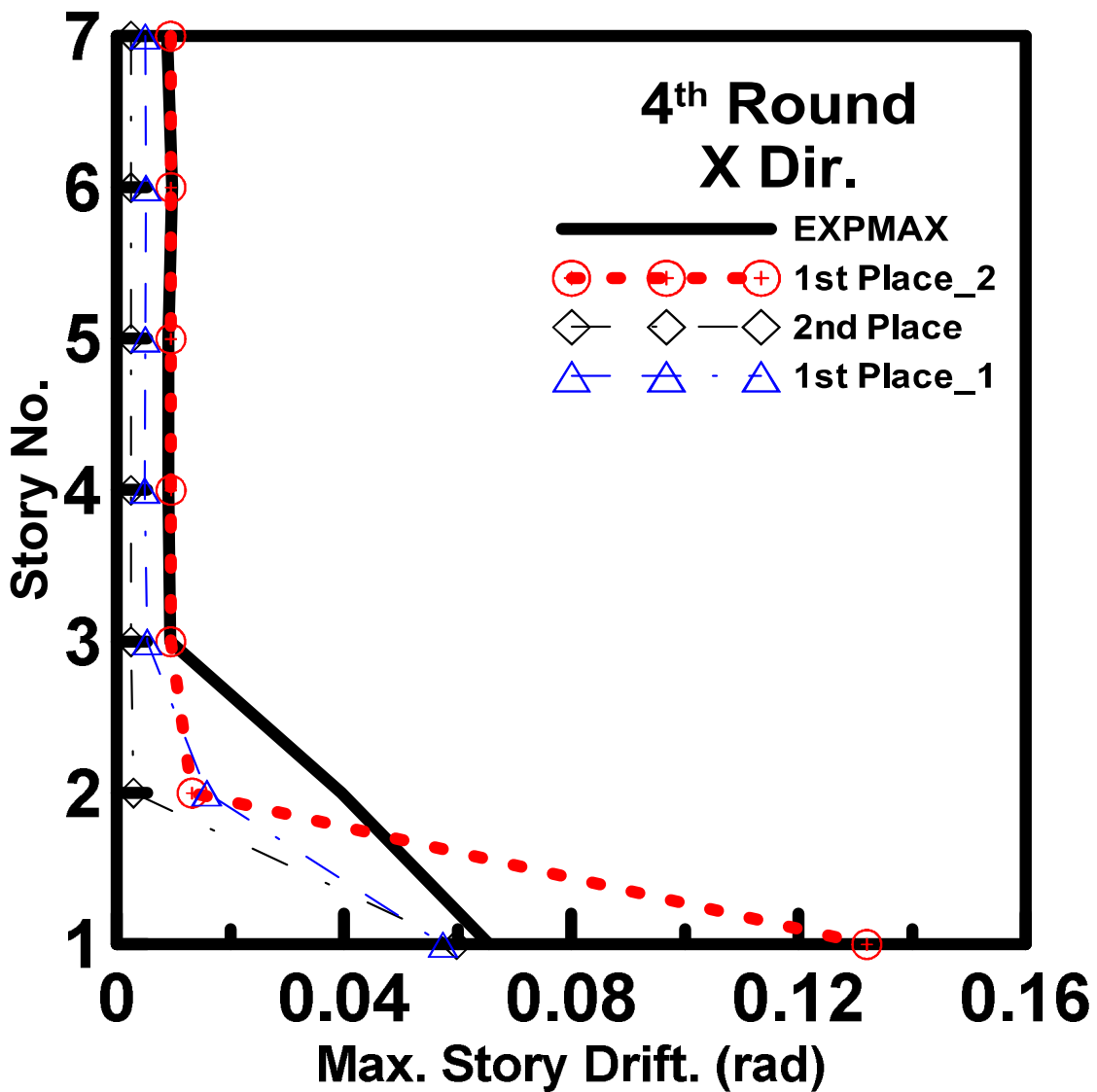
*National Center for Research on Earthquake Engineering*



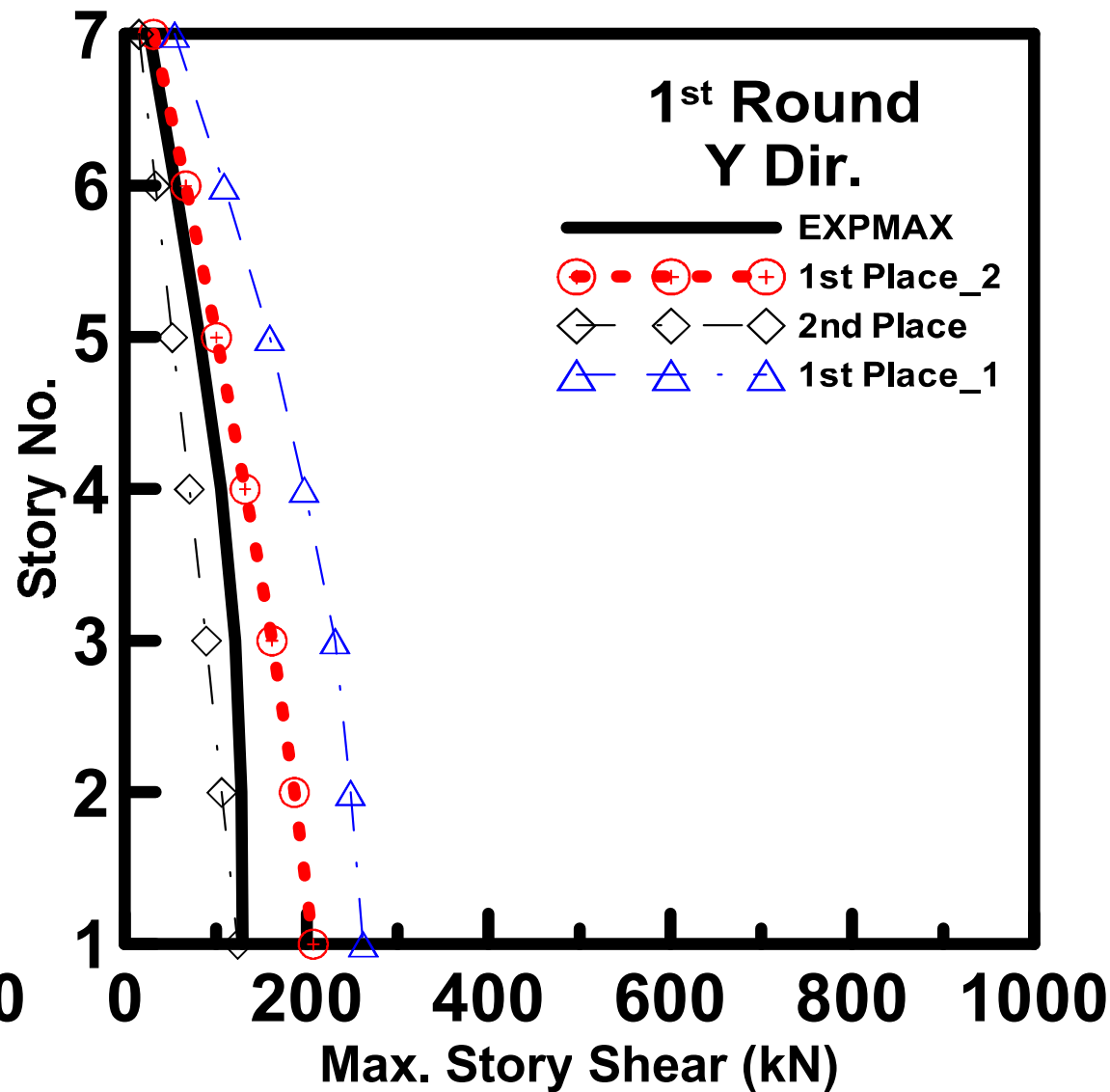
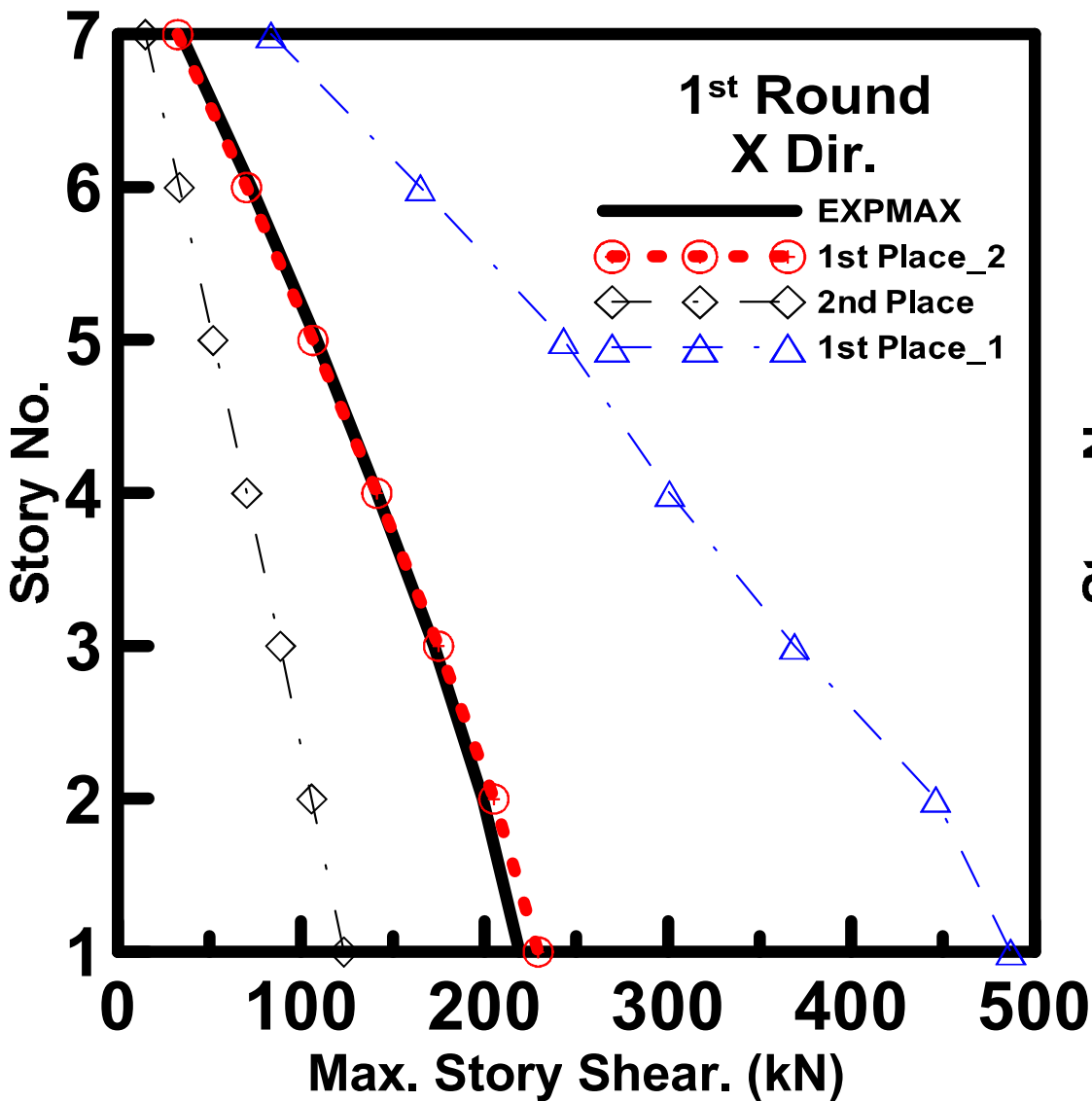
*National Center for Research on Earthquake Engineering*



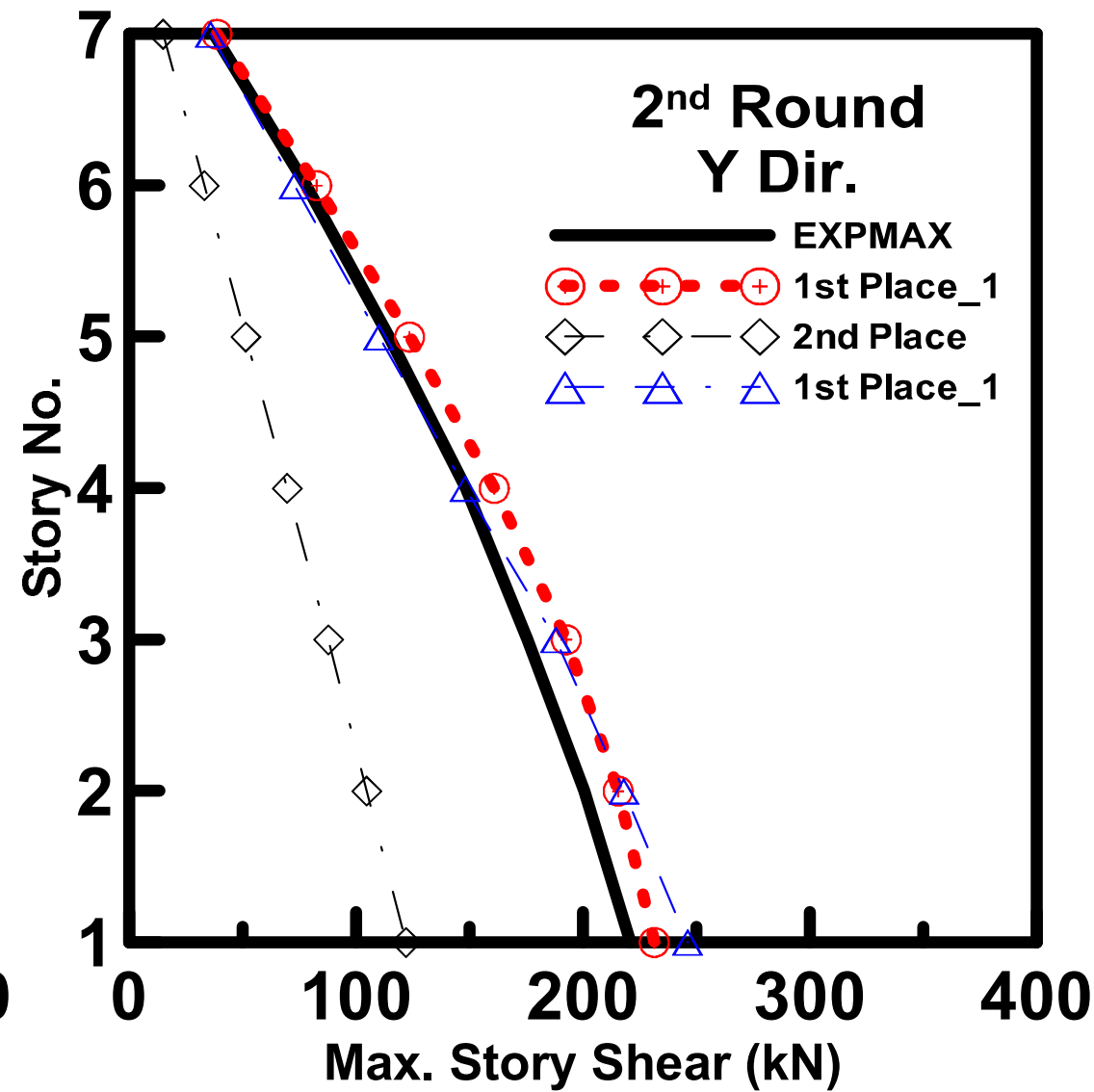
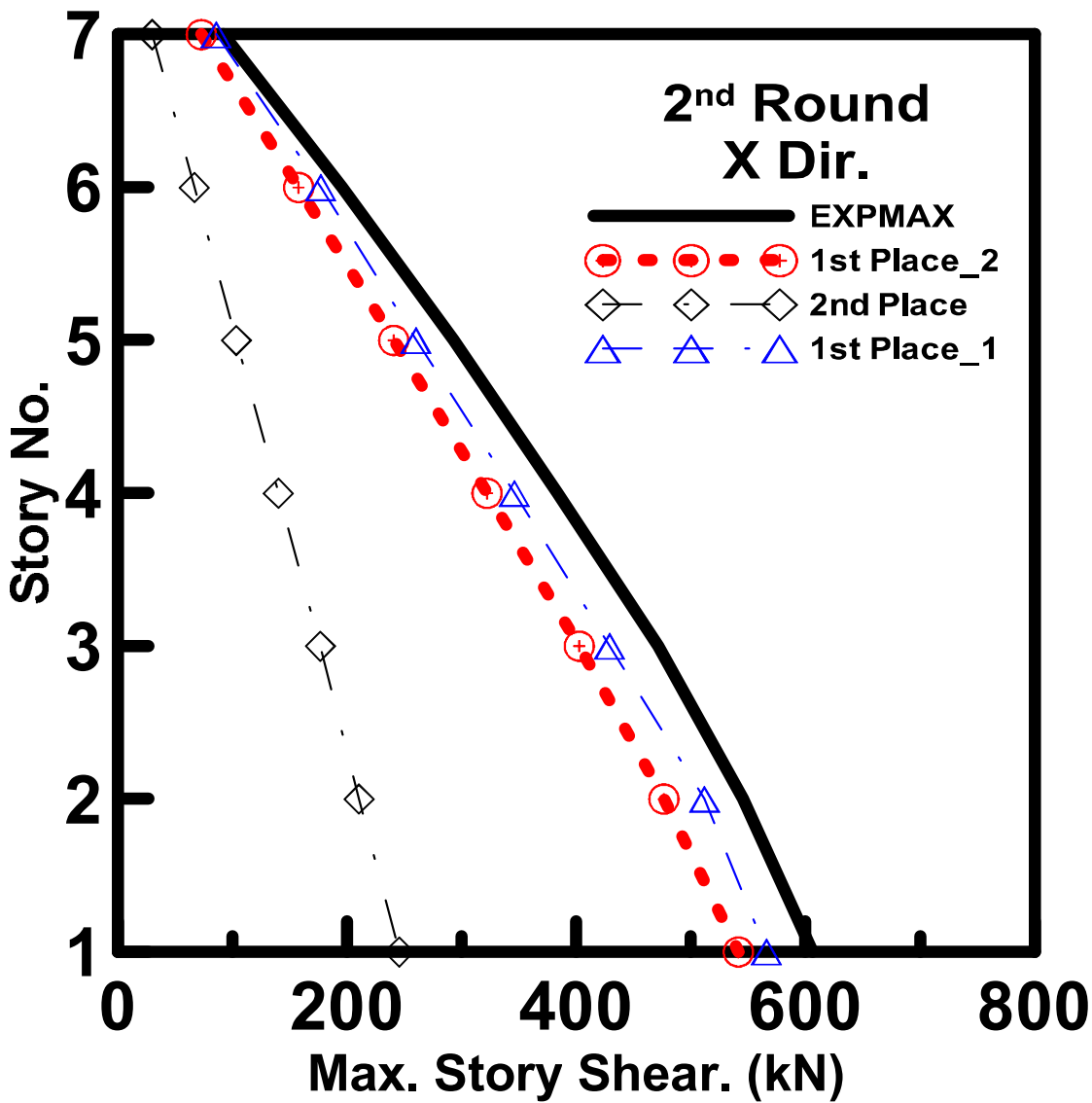
*National Center for Research on Earthquake Engineering*



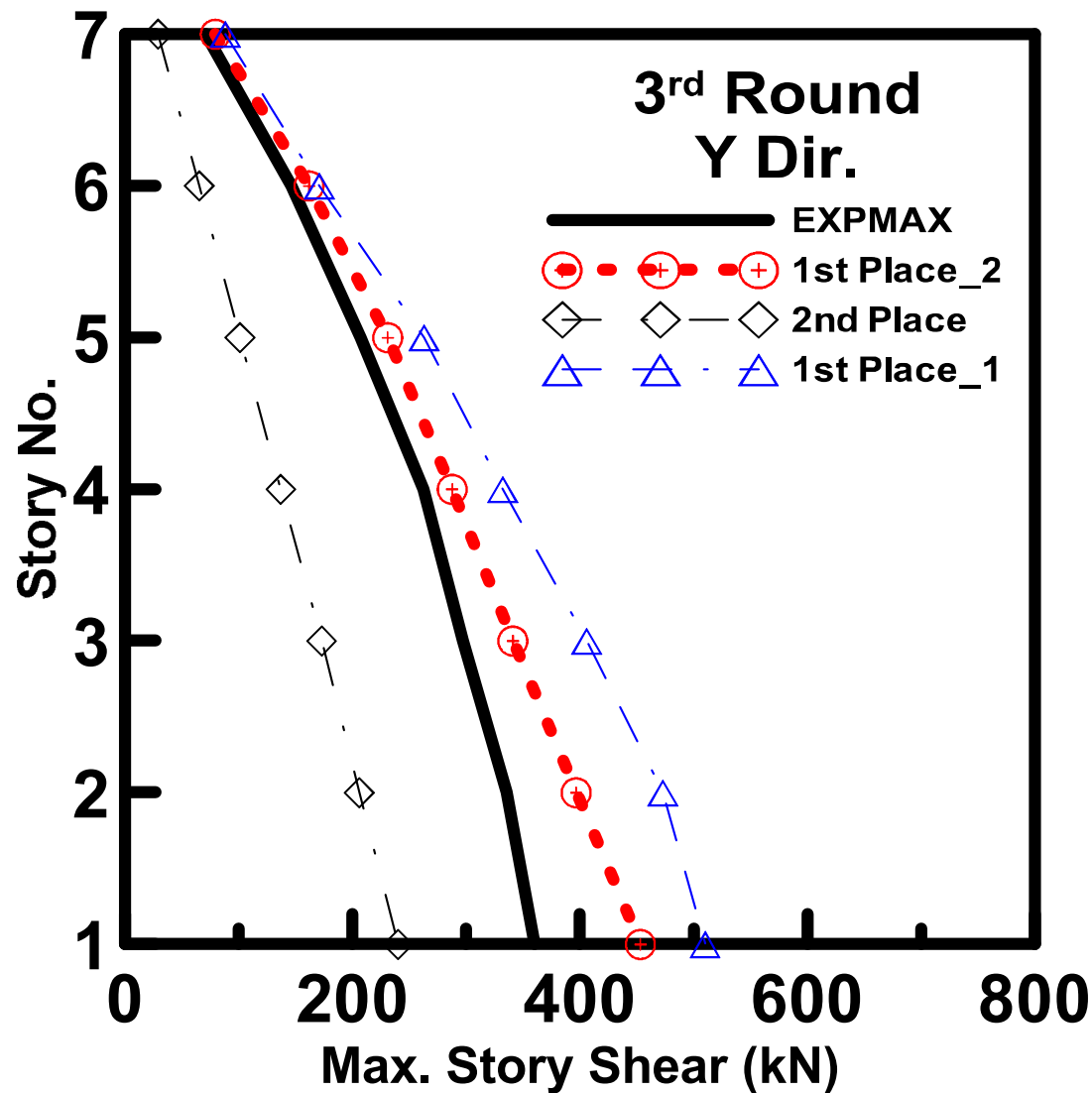
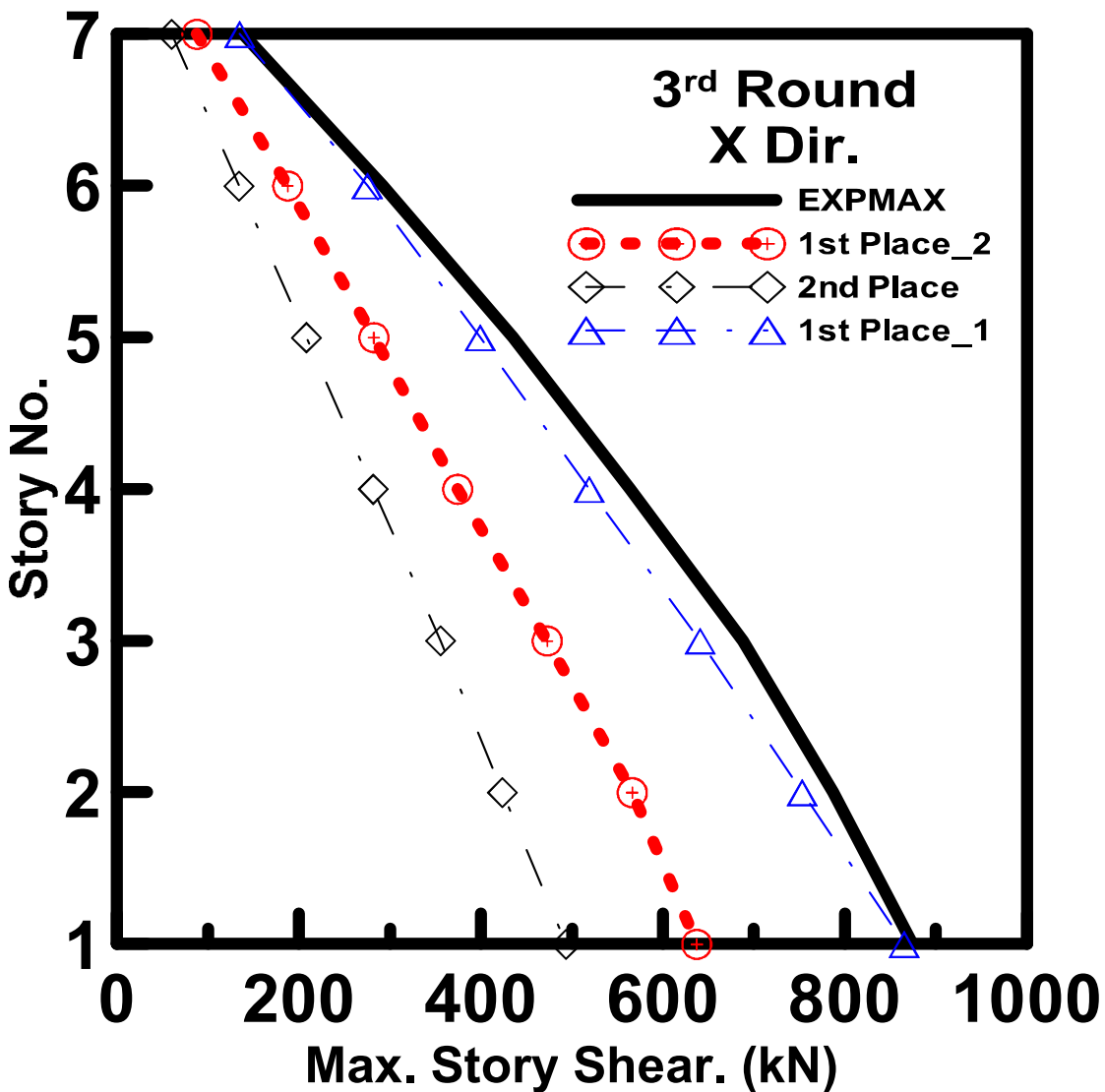
*National Center for Research on Earthquake Engineering*



*National Center for Research on Earthquake Engineering*

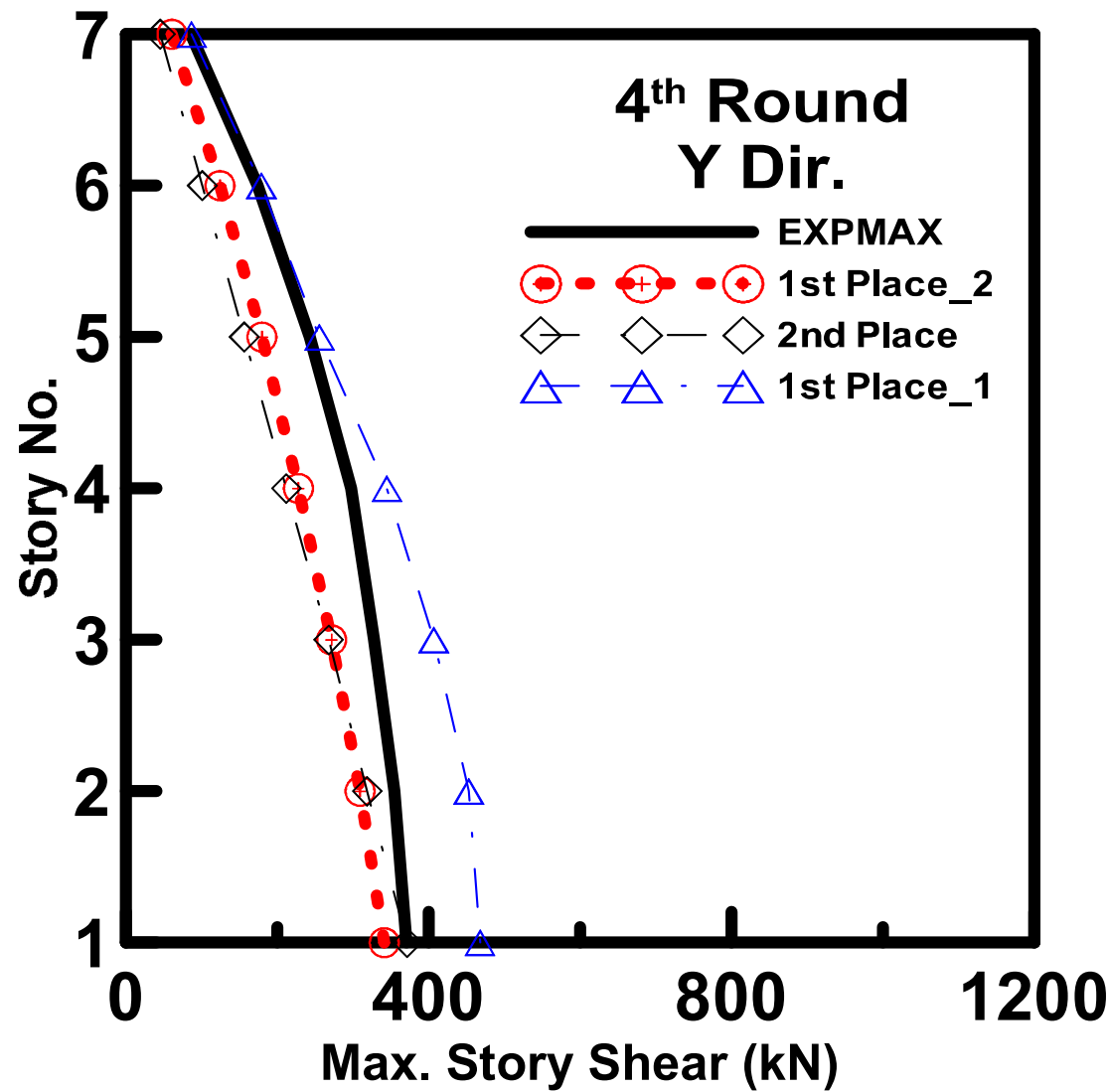
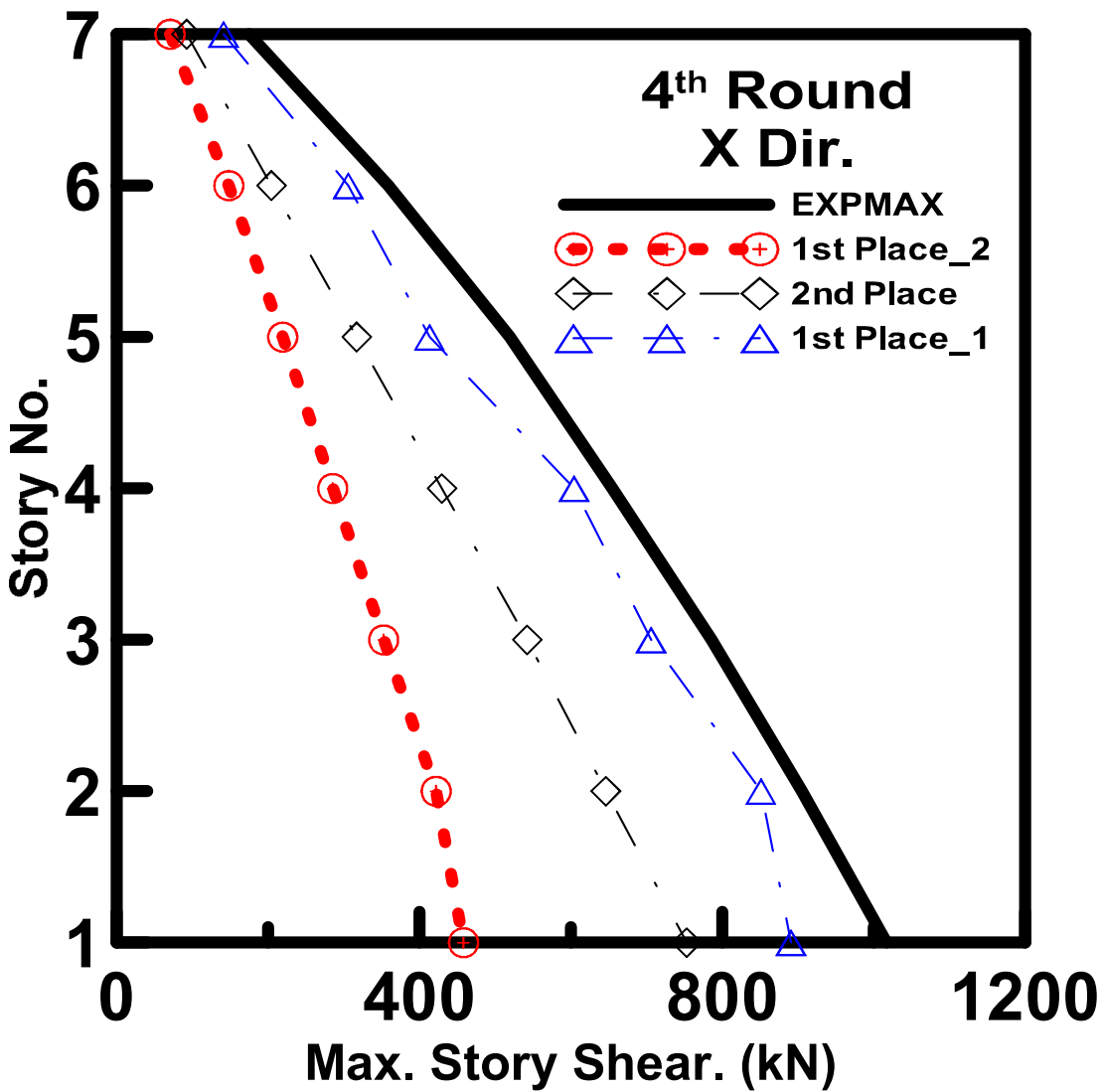


*National Center for Research on Earthquake Engineering*

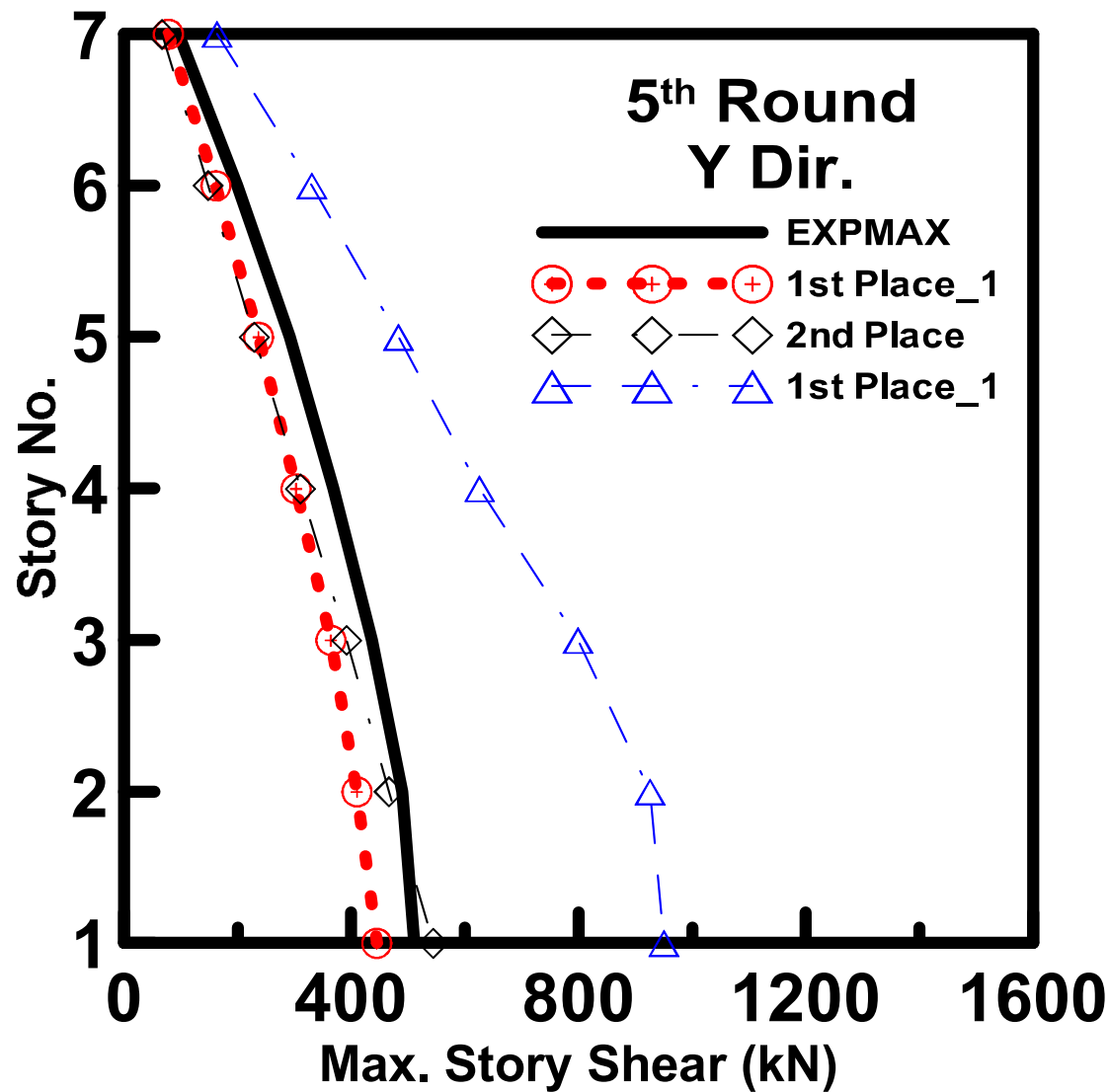
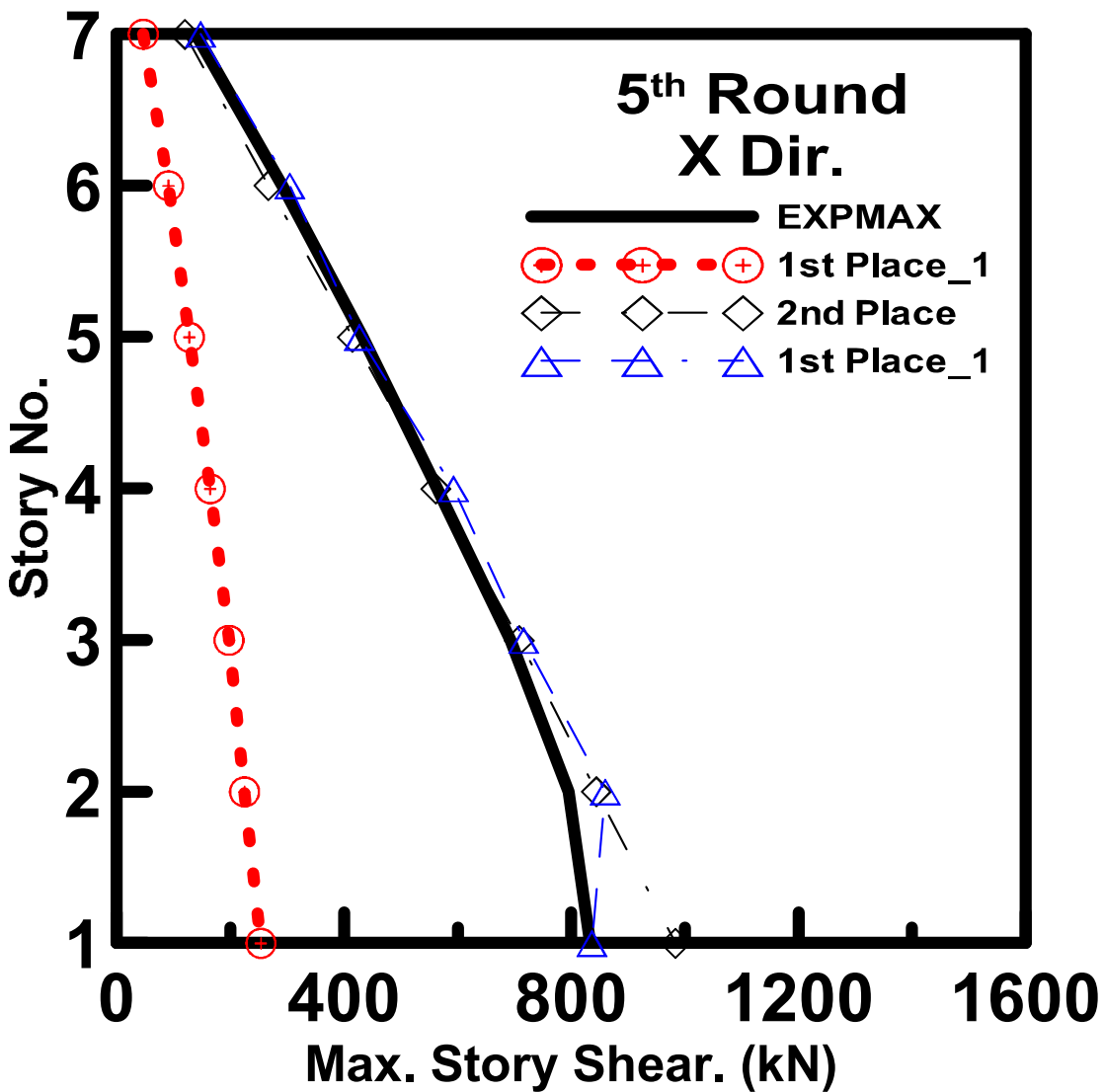


*National Center for Research on Earthquake Engineering*

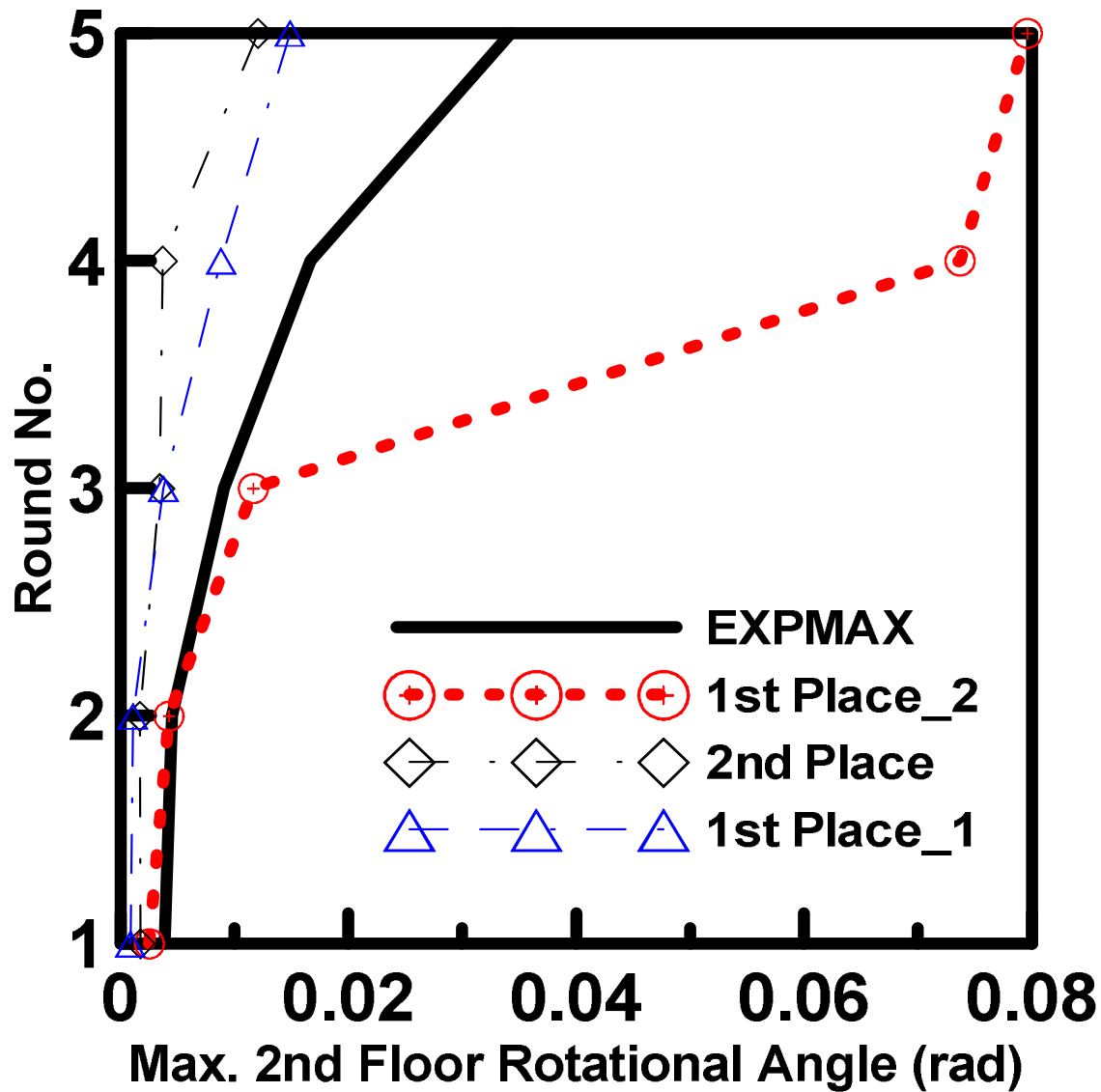




*National Center for Research on Earthquake Engineering*



*National Center for Research on Earthquake Engineering*



*National Center for Research on Earthquake Engineering*

*National Center for Research on Earthquake Engineering*

～ Winners ! ～

1<sup>st</sup> Place:

Yasunori Mizushima , Takuya Kinoshita, Yuki Idosako and Hiroto Takatsu  
Research and Development Institute, Takenaka Corporation, Chiba, Japan

1<sup>st</sup> Place:

Riku Sakamoto\*, Zhang Kaiwei\*, Li-Wei Yu\*\*, Kuang-Yen Liu\*\*

\*Kozo Keikaku Engineering, Tokyo, Japan

\*\*National Cheng Kung University, Tainan, Taiwan

2<sup>nd</sup> Place:

Xinlei Jin and Chi Zhang (金鑫磊和张弛)

Department of Civil Engineering, Tsinghua University, Beijing, China.

# Awards

Awards will be given in a special ceremony at the **International Conference on Earthquake Engineering in Commemoration of the 20<sup>th</sup> Anniversary of the 1999 Chi-Chi Earthquake**. A representative of each winning team will be invited to this conference that will be held in Taipei, September 15-19, 2019. NCREE will cover the registration fee and accommodation expenses for the winners' participation in the conference. The representative will be asked to make a short presentation on the techniques used (model and analysis) in making the winning predictions. The awards for the 1<sup>st</sup> – and 2<sup>nd</sup> –place teams are US\$2,000 and US\$1,500, respectively.

***National Center for Research on Earthquake Engineering***